



HEALTHCARE  
FACILITIES  
symposium and expo

September 24-26, 2024

Austin Convention Center  
Austin, TX

[hcarefacilities.com](https://hcarefacilities.com)

## EXHIBIT & SPONSORSHIP PROSPECTUS

*Opportunities to reach healthcare facility  
buyers and architects who specify*

### CONNECTING ALL STAKEHOLDERS

*Responsible for the Planning, Design, Construction  
and Operations of Healthcare Facilities*

**37**  
years  
of innovation  
in healthcare

Care | Design | **IMPACT**

Contact Ann Belz at  
203-307-2696 or  
[ann@jdevents.com](mailto:ann@jdevents.com)

*“The Healthcare Facilities Symposium and Expo offers the opportunity to connect with healthcare system executives, facilities managers, architects, and designers and gives exhibitors a chance to highlight their products and make new connections.”*

—NICK NICHOLS, DIRECTOR OF BUSINESS DEVELOPMENT, SKYLINE ART

*“I am so glad that I decided to participate in the 2022 Healthcare Facilities Symposium & Expo in Long Beach, California! This was our first time participating and it exceeded all our expectations. The entire event was run smoothly by the HFSE team who were incredibly organized, quick to respond to all questions, and made the process easy. We were excited about the traffic to our Expo Booth. I would say to anyone thinking about participating-do it, you will not be disappointed!”*

—JIM CAREY, VICE PRESIDENT, WEST, KRUG

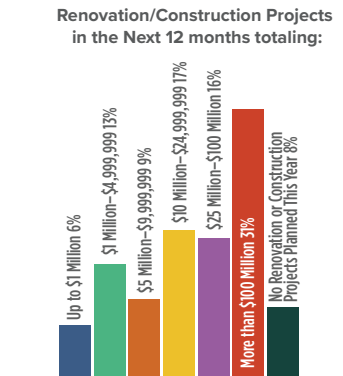
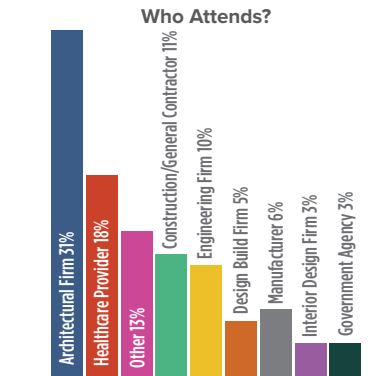
## STAND OUT AND BE SEEN

- Don't drown in a big ocean of exhibitors or be dwarfed by others like at other shows.
- Exhibit at HFSE – stand out and be seen by key healthcare facilities buyers and specifiers with big budgets and buying power.
- HFSE's audience is more targeted, more focused, and delivers better ROI. The event is cost effective, results-oriented and an efficient use of your time.

## DIFFERENT BY DESIGN

- Healthcare Providers present on all of our educational panels (it's required).
- Healthcare Providers make up one of the largest audience segments of our show.
- Healthcare Providers serve on our independent advisory board and provide critical insight into what's on the mind of the industry that HFSE needs to address.
- Healthcare Provider focused - offering special pricing for employees of hospitals/healthcare providers and offering sessions for healthcare providers only.

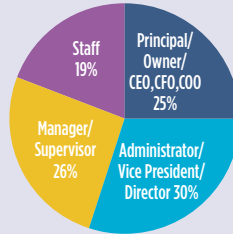
Join us in Austin for a different kind of healthcare tradeshow experience!  
Call today to reserve your booth, design gallery or sponsorship!



### LARGE BUDGETS AND BUYING POWER

- **92%** of 2022 attendees were involved in projects
- **45%** of those projects valued at **\$10 Million** or more and
- **31%** of those projects valued more than **\$100 Million**

### High Level Decision Makers



## ABOUT US

- **RICH HISTORY WITH PROVEN TRACK RECORD** In 2024, the Healthcare Facilities Symposium & Expo (HFSE) will celebrate our 37<sup>th</sup> year connecting some of the most passionate and dedicated thought-leaders in healthcare construction and design in Austin, TX.
- **EXTENSIVE OPPORTUNITIES** are available to reach your target audience of healthcare buyers and specifiers all year. This includes exhibitor opportunities and digital options like Custom Webinars, Custom Emails, Solution Spotlights and Leaflet e-Newsletter Advertising. Design Team Galleries are available for architectural firms to showcase projects and provide a 15-minute speaking opportunity (limited

availability) and sponsorships to elevate your brand. These buyers come to HFSE searching for products and solutions for designing and building innovative healthcare environments.

- **A DIFFERENT EXPERIENCE** Join us and meet our niche audience coming from across the country to HFSE, gathering together in a special, caring community environment that truly makes HFSE unique. The engagement, the emotions, the magic from the inspirational keynotes, the music, passionate presentations, the dedicated people, results in more in-depth interactions, and quality conversations that are more meaningful and that bring results. Join us in Austin.

## TRADE & ASSOCIATION PARTNERS

HFSE partners with a range of industry associations, publications, blogs and e-newsletters on marketing, special events, exhibits and education including:



## EVENT HIGHLIGHTS

- **Audience.** Meet face-to-face with thousands of motivated, interested and engaged stakeholders responsible for purchasing products and solutions to improve their current and new facilities.
- **Robust Educational Program.** World-class conference program featuring thought leaders from design firms and healthcare facilities. Our educational program includes conference sessions, inspiring keynote presentations, dynamic interactive pre-conference workshops, discussion forums, facility tours and more.
- **Esteemed Independent Advisory Board.** HFSE receives industry support, expert advice and guidance from some of the top industry leaders from across the country.
- **Promotional Outreach.** HFSE's extensive promotional campaign includes print ads, email marketing, digital media, retargeting, social media, and telemarketing resulting in over a million impressions across all channels.
- **Networking Events and Quality Face Time with Attendees** in the Exhibit Hall and at networking events including the Symposium Party and Raffle Fundraiser, the Networking Reception Ice Cream Social, the Networking Mixer Happy Hour, the Awards Luncheon, Networking Lunch on the Exhibit Floor and more.

## EXHIBIT HALL & NETWORKING SCHEDULE

### TUESDAY, SEPTEMBER 24, 2024

7:00 – 8:30 AM	Networking Breakfast
8:30 – 9:45 AM	Keynote Presentation
11:00 – 11:15 AM	Recharge Break
12:15 – 1:30 PM	Awards Luncheon
2:45 – 3:00 PM	Networking Break
4:00 – 6:00 PM	Exhibit Hall Open
4:00 – 6:00 PM	Symposium Party & Raffle in Exhibit Hall

### WEDNESDAY, SEPTEMBER 25, 2024

7:00 – 8:00 AM	Networking Breakfast
9:15 – 10:30 AM	Keynote Presentation
10:30 – 3:00 PM	Exhibit Hall Open
10:45 – 2:45 PM	Design Solutions Theater Presentations
11:30 – 1:00 PM	Networking Lunch in Exhibit Hall
2:00 – 3:00 PM	Ice Cream Social in the Exhibit Hall
6:00 – 7:30 PM	Happy Hour — Offsite

\*See website for complete schedule.

# EXHIBITING September 24–26, 2024

## WHY EXHIBIT OR SPONSOR AT HFSE?

- **Showcase your solutions** to our audience of high-value, senior leaders from hospitals, healthcare systems, construction, architectural design and engineering firms including healthcare providers, architects, facility managers, engineers, interior designers, construction professionals, healthcare planners and owners.
- **Reach your target audience** and gain access to key decision makers you might not otherwise reach.
- **Lead generation**—build your pipeline to drive sales.
- **Network with peers** and build new relationships with key industry experts to help grow your business.
- **Thought leadership**—create brand awareness and increase ROI.

## HFSE 2024 EXHIBITOR PACKAGES

Exhibit space and promotional opportunities designed to drive buyer traffic pre-event, at the event and post-event.

### EXHIBITOR BOOTH PACKAGE

**\$4,395 per 10'x10' booth space**  
(\$350 charge for each exposed corner)

Your Investment Includes:

- Company listing and description on website and in Event Guide
- Exhibitor listing in the HFSE Mobile App
- Company branding included in our extensive event marketing campaign
- Top 25 Invitation Program: (Free Conference Pass) Invite your Top 25 qualified customers and prospects from healthcare to HFSE – they receive a one-day Conference Pass at no charge. \*(Deadlines apply).
- VIP Expo Hall Invitation Program: (Free Exhibit Hall Pass). Invite an unlimited number of guests to the exhibit hall for free using our Be Our Guest Email or PDF ticket.
- 4 exhibitor personnel badges per 10'x10' booth
- 1 Full Conference Pass (\$1,795 value)
- Post-Show attendee mailing list
- Admission to Happy Hour networking party at an offsite venue.
- Booth includes: Company identification sign, 8' high back drape with 3' high side drape, 24-hour perimeter security

### ENHANCED EXHIBITOR LISTING

- Call for Details

### CONVENIENT BOOTH PACKAGE

**\$5,255 per 10'x10' booth space**

Includes standard Exhibitor Booth Package listed above PLUS the following items for inside your booth:

- Carpet
- 6' table skirted (black drape)
- 2 Black Diamond side chairs
- Corrugated wastebasket
- Electric - 500-watt outlet
- Up to 200 lbs. of drayage  
(No substitutions or upgrades, offer expires September 1, 2024)

### DESIGN TEAM GALLERY

**\$4,195 per space**

#### ONSITE DISPLAY

- Space for two 40" x 40" poster boards to showcase your healthcare project
- Company identification sign
- A bin to distribute marketing material up to 8.5" x 11"
- A business card holder to collect attendee leads
- On-site labor to hang project boards
- Return shipping of boards

#### BRANDING & EXPOSURE

- Company listing and description on HFSE website, Event Guide and in HFSE Mobile App
- 15-minute Presentation in the Design Solutions Theater Limited Availability!
- Digital Design Gallery Presence - Your digital images will be displayed in a second high traffic area of the show.
- Solution Spotlight – email promoting your firm is sent to our pre-registered attendees
- Company branding in our extensive marketing campaign including emails, social media and more

#### EDUCATION & NETWORKING

- 2 Full Conference Passes – 1 for your company and 1 for your client (\$3,590)

### ENHANCED GALLERY LISTING

TBD

\*Qualified individuals for complimentary conference passes are architects, interior designers, engineers, contractors and representatives from healthcare facilities. Product manufacturers, services providers and consultants do not qualify for the complimentary conference invitation program. They must not be currently registered. If they participated in the Free program last year, they do not qualify. Duplicate names submitted by different companies will be invited by the first company who submits.

## MAXIMIZE SUCCESS AND ROI

- **Participate in all the show has to offer**, not just the exhibit hall, but also the conference sessions, workshops and networking events to maximize your face time with key healthcare facilities buyers and healthcare architects and increase ROI and success.
- **Exhibit Hall Feature Areas** driving engagement and traffic on the show floor include two Design Solutions Theaters featuring architectural design firm presentations, HFSE Engagement Area, Ask the Expert, two mobile show rooms, Scavenger Hunt and more designed to encourage attendees to spend more time.
- **Top 25 Invitation Program** (Free Conference Pass) is designed to help our exhibitors be successful and meet with your top healthcare customers and prospects at the event. Your top prospects will be invited to attend our highly acclaimed conference program and expo for free.
- **Branding** – Year-round exposure on our website, emails, retargeting, social media, hundreds and thousands of impressions.

## HFSE PRODUCT AND SERVICE CATEGORIES:

Acoustical Solutions	Lighting Services
Architects	Lockers/Storage
Artwork/Pictures	Mechanical Systems
Asset Tracking	- HVAC/Plumbing/Heating
Building Automation & Management Systems	Medical Beds/Headwalls
Building Materials	Medical Equipment
Cabinets/Casegoods	Mobile clinics/kitchens
Ceiling/Ceiling systems	Modular Wall Systems
Cleaning Supplies & Equipment	Modular/Temporary Buildings
Communications Systems	Nurse Call Systems
Construction Management	Patient Handling Equipment/Lifts
Doors/Frames/Windows/ Skylights	Plumbing Fixtures/Equipment
Electrical Equipment	Radiation Shielding
Electronic Medical Records (EMR)	Roofing Systems/Products
Elevators/Escalators	Security Systems: Access Control/CCTV
Engineering Consulting	Software - IT
Environmental Products	Solar
Fabric/Textiles	Stone/Tile/Concrete
Fire/Safety Systems	Storage Systems
Flooring/Floor Coverings	Surfacing Materials
Furniture/Furnishings	Technology Systems
Glass Products	Telehealth
Green Products	Wall Panel Systems
HVAC Equipment	Washroom Fixtures
Insulation & Moisture Control	Waste Management
Interior Wall Surfaces	Water Features
Kiosks & Interactive	Water Treatment
Lighting Products	Wayfinding/Signage/Digital Signage
	Window Treatments/Textile/Fabrics
	Workstations

# DIGITAL OPPORTUNITIES, MARKETING, BRANDING, TRAFFIC DRIVERS AND SPONSORSHIPS

HFSE offers marketing, branding, sponsorships and numerous digital opportunities to elevate your brand by connecting you with our healthcare design and construction community year-round.

Reach our HFSE audience anytime and drive revenue now. You'll build brand awareness, grow your business and stay engaged with high level healthcare buyers and specifiers.

You can Sponsor a Custom Webinar to position your organization as a thought leader, educate the industry and create brand share, while generating leads. Or consider a Custom Email, digital advertisement featuring your product in our Leaflet E-Newsletter, Solution Spotlight email promotion or White Paper.

**CALL TODAY to discuss a strategic marketing program to drive your success.**

**Leaflet e-Newsletter Advertisement** \$650 / \$750 per ad

Advertise in the *Leaflet* bi-monthly e-newsletter featuring articles submitted by Symposium Advisory Board members and speakers, guest columnists, industry views from *Medical Construction & Design Magazine*, editorial content, recent tweets from @hcarefacilities and white papers.

**Custom Webinar** 1 Webinar for \$5,000; 2 Webinars for \$8,000; 3 Webinars for \$11,000

This is an opportunity for your subject matter expert to provide a relevant online webinar presentation to our healthcare design and construction community. Position your organization as a thought leader, create brand share, while generating leads.

Gain exposure to potential clients while having their undivided attention, providing valuable information including case studies, best practices, and lessons learned, not only demonstrating your organization as an industry expert but separating your organization from your competition.

Includes 60-minute webinar presentation and on demand archived version on hcarefacilities.com, branding and visibility, lead report of registrant's full contact information, 3 custom registration questions, and post-webinar survey. Our webinar team will handle the logistics, marketing and promotion and will walk you through the process.

**Custom Email Promotions** \$2,500 / \$3,500

Provide a custom email and get your compelling message into the hands of our Healthcare Facilities Symposium audience. This is an excellent way to promote your products and participation at HFSE 2024—driving traffic to your booth, website and sales office. This email is exclusive to your organization—you own the messaging, branding and content. *Limited availability.*

**White Paper Promotion** \$1,000 / \$1,500

White paper opportunities include promotion and hosting of a white paper on hcarefacilities.com for six months and additional bonus distribution in a minimum of one Leaflet e-Newsletter. Lead report provided monthly with full contact information including email addresses.

**Solutions Spotlight Email Promotion**  
Basic Spotlight \$650 / \$750; Enhanced Spotlight with Video \$900/\$1,000

Feature your product or solution in a shared Solutions Spotlight email promotion. This monthly email promotion showcases a limited number of innovative products and solutions to the Healthcare Facilities Symposium & Expo community. The email includes your product image, headline, target URL and description.

**HFSE Website Banner Advertising** \$750/month

- Build brand awareness and drive traffic to your booth or Design Team Gallery with an HFSE Website Banner Ad
- (1) Banner Ad (728 x 90) Run of Site (ROS) advertising on the HFSE Website, can appear on any web page.



# SPONSORSHIP OPPORTUNITIES

## Traffic Drivers, Advertising and Sponsorships to Elevate Your Brand

We have a variety of sponsorships to choose from to reinforce your brand to our high value attendees. Tie your brand to our high-level educational content as a Conference Session Room Sponsor. Have a new product or service you would like to highlight at the Healthcare Facilities Symposium & Expo? Call me to discuss branding opportunities and sponsorships to help achieve your goals.

Opening Keynote Sponsor	Mobile App Banner Advertising
Day Two Keynote Sponsor	Pop Up Banner
Closing Keynote Sponsor	Lounge Seating in Hallway
Networking Lunch on Exhibit Floor	Happy Hour Sponsor
Symposium Party	Design Solutions Theater Sponsor
Ice Cream Social in Exhibit Hall	Flooring Sponsorship
Aisle Signs	Custom Webinar
Registration	Leaflet e-Newsletter Advertising
Facility Tour Bus	Solutions Spotlight Email Promotion
Networking Breakfast (3)	Custom Email Promotion
Exhibit Hall Coffee Break for Attendees	White Paper Promotion
Water Bottles	Window Clings
Event Guide Floorplan	Floor Clings
Lanyards	Escalator Clings
Notebooks	Column Wraps
Badges	Raffle Prize Bucket
Conference Session Room Sponsor	Hydration Sponsorship
Private Business Suite	Sustainability Sponsorship
Attendee Distribution Item	Countdown to HFSE Newsletter
Pen Sponsor	
Banner in Prime Location	
Mobile App Sponsor	

**Construction Companies** – Have your brand seen by every attendee as our Badge Sponsor, Lanyard Sponsor, Registration Sponsor and more. And we'll include a full conference pass to attend the conference sessions with your sponsorship – call for details.

**Flooring Companies** – Sponsor the aisle where your exhibitor booth is located for maximum visibility.

**Window Clings, Floor Clings, Escalator Clings, Column Wraps** – Call for Details

**NEW HFSE ENGAGEMENT AREA** – Call for Details

**Furniture Companies** – sponsor the Design Solutions Theater and provide the seating in these high traffic education areas of the show floor. Additional opportunity to provide lounge seating in high traffic area.

### SPONSOR AT THE HIGHEST LEVEL

**Platinum, Gold, and Silver Sponsorships are available.** Choose from three levels for a comprehensive pre-event, on-site and post event branding at top billing.  
**Custom Sponsorships Available** – Call to discuss a custom sponsorship to meet your needs.

### HOW ARE YOU DRIVING TRAFFIC TO YOUR BOOTH?

Are you looking for ways to enhance your presence and have your organization stand out above your competition? Check out our advertising opportunities, Passport Program and Sponsorships to elevate your brand. Don't miss out on these great marketing and sponsor opportunities designed to maximize your company's visibility and drive traffic to your booth:

#### Scavenger Hunt Sponsorship

\$3,000

- Logo on Event Guide Sponsor Page
- Logo with Company Description in Event Guide & Website Exhibitor List
- Logo/Link on Website Sponsors Page
- Attendees will be given a clue to point them to your booth
- Logo on Onsite Sponsor Banners (Deadlines apply)
- Pre-Show and Post-Show Attendee Mailing List
- (1) full conference pass (\$1,795 value)

#### Advertising in Event Guide

Deadline: August 12<sup>th</sup>

One of the most cost effective ways to promote your brand and messaging. Attendees utilize the Event Guide during the show and year round.

- Logo in Event Guide/Website \$500
- Additional listing in Event Guide/Website \$500
- Full Page Ad in Event Guide \$1,595
- Half Page Ad \$800
- Inside Front Cover \$2,000
- Inside Back Cover \$2,000
- Back Cover \$2,500

#### Branding Sponsorship

\$2,500

Achieve maximum exposure at a fraction of the cost. Increase brand awareness with HFSE attendees.

- Logo in Attendee Brochure
- Logo on Event Guide Sponsors Page
- Logo with company description on website and Event Guide exhibitor lists.
- Logo/Link on Website Sponsors Page
- Logo on onsite Sponsors Banner
- Pre-show attendee mailing list
- Post-show attendee mailing list

Limited Quantity!

#### Raffle Prize Bucket Traffic Driver In Your Booth

\$500

We hold an annual raffle each year with prizes donated by our raffle committee, to give back to a well deserving organization.

- Participating companies will have a "Raffle Prize Bucket" in their booth.
- Attendees will come to your booth to speak with you and will drop tickets in the bucket for the raffle item associated with your company.

### SECURE YOUR BOOTH, DESIGN GALLERY OR SPONSORSHIP TODAY!

CONTACT: Ann Belz | ann@jdevents.com | 203-307-2695 or 603-471-0877

# ATTENDEE LIST

## SAMPLE OF 2022 HOSPITALS, HEALTHCARE FACILITIES AND HEALTH SYSTEMS:

Advocate Aurora Health	Froedtert Health	Novant Health	U.S. Department of Veterans Affairs
AL BURAIMI HOSPITAL OMAN	Gundersen Health System	Office of Construction & Facilities Management	UCHealth
ARA Health Specialists	Hallsta, Inc.	OMA Fertility	UCHealth Memorial Hospital
Archwood House CLHF, Inc.	Harbor-UCLA Medical Center	OSHPD/HCAI	UCLA Health Planning, Design and Construction
Atlantic Health System	Henry Mayo Newhall Hospital	Petra	UK HealthCare Facilities Planning
Atrium Health	Hoag Memorial Hospital Presbyterian	PIH Health	UKHC
Ballad Health	Housing for Health (HFH) Los Angeles County Department of Health Services (DHS)	Pointcore Construction	UnityPoint Health
BJC HealthCare	Houston Methodist	Pomona Valley Hospital Health Center	University Health System
Bon Secours Mercy Health	Houston Methodist The Woodlands Hospital	Providence Health	University of Iowa Healthcare
Boston Children's Hospital	Inspira Health	Providence St Johns health center	University of Iowa Hospitals & Clinics
Boston Medical Center	Intermountain Healthcare	Providence Tarzana Medical Center	University of Kentucky
Brigham and Women s Hospital	IU Health	Provincial Health Services Authority (PHSA)	University Of Miami
Broadus & Associates	Jesse Brown VA Medical Center	Queenscare Health Center	University of Michigan Health / Michigan Medicine
California Dept of Corrections	JIANGXI PEOPLES HOSPITAL	Rady Children's Hospital	University of Nebraska Medical Center
Catholic Health	Kaiser Permanente	San Bernardino County - Arrowhead Regional Medical	University of Texas Health San Antonio
CBRE	Kaiser Permanente - Delivery System Strategy	shanghai fuzhou expo coltd	University of Utah Health
Cedars Sinai	Kaiser Permanente Enterprise Business Services	Sharp Healthcare	University of Virginia Health System
Central Health	Kaiser Permanente National Facilities Services	SJS Executives	UT Southwestern
Centre for Addiction and Mental Health	Kingsbrook Jewish Medical Center	State of TN	VA LONG BEACH
Children hospital of Los Angeles	Kingsbrook Jewish Medical Center/ Rutland Nursing Home / Schulman Schachne Institute	Tanana Chiefs Conference	VA Long Beach Healthcare System
Childrens of Alabama	LBMCC/MCWH - MemorialCare	The Hospital for Sick Children, Toronto	VA Tibor Rubin Medical Center
Childrens Hospital of Philadelphia	Loma Linda University Health (LLUH)	The MetroHealth System	Veterans Affairs
CHLA	Long Term Medical and Rehabilitation Hospital	The Ohio State University Wexner Medical Center	Veterans Affairs Long Beach
City of Hope Medical Center	Los Angeles County Department of Health Services	The University of Kansas Health System	Vizient Inc
City of Long Beach	Los Angeles County, Harbor-UCLA Medical Center	The Wright Center for Graduate Medical Education	Wellstar Health System
Cleveland Clinic	Lucile Packard Children s Hospital	Tibor Rubin VA Medical Center	West Palm Beach VA Healthcare System
Cleveland Clinic FGH. and St Alexis Hospital	M2 Orthopedic Partners	Torrance Memorial Medical Center	Wolfson Children's Hospital at Baptist Health
Coast Environmental	Mass Eye and Ear	TRL Systems	
Columbia University Irving Medical Center	Mayo Clinic		
Consulting Program Manager	Memorial Hermann		
Housing for Health Los Angeles	Memorial Sloan Kettering		
County Department of Health Services	MemorialCare		
Cushman & Wakefield	Mercy		
Delaware Valley Community Health	Ministry of Health of Ukraine		
Department of Health Care Finance	Mount Nittany Medical Center		
Department of Veterans Affairs	Mount Sinai Hospital		
Dept. of Veterans Affairs	Newfield s		
Development and Construction Insight	Northwestern Memorial Healthcare		
Easyway			
Emanate Health			
Enabled Advisors			
FDD-HCAI			
Feipeng Technology Jiangsu Co.,ltd			
Fred Malkin			



# ATTENDEE LIST

## SAMPLE OF 2022 ARCHITECTURE, CONSTRUCTION, DESIGN AND ENGINEERING FIRMS:

A LIVING WORKSPACE	Clark Construction Group	HED	National Roofing	SpawGlass Contractors, Inc.
About Design	CME Corp	Hendy	NBBJ Architects	SpeakEZ Communications
ACI Boland Architects	CMTA Inc.	Hensel Phelps	NELCO Worldwide	SS&A
Adams Project Management Services	CO ARCHITECTS	Hernandez Installation Services	Nevell Group Inc.	SSE, Inc. Structural Engineers
AE7 Architects	Coldwell Banker Commercial	HGA Architects and Engineers	NewGround	Stackmodular
AEGIS HC LLC	ConAm Building Co.	HGW Architecture	Northstar Management Company LLC	Stantec
Aesthetics, Inc	Connected Healthcare Resource Advisors	Hitchcock Design Group	OCI Design	Stengel Hill Architecture
Affiliated Engineers, Inc.	Consultant	HKS	Oculus	Strategic Building Services
AIC - Ecuador	Coreal International Inc	HMC Architects	Open Range Artmakers	STRATEGIC PLAN CONSULTING INC
AkitaBox	Covalus	Hobbs + Black	osca inc	Studio O
American Art Resources	Criterion	Hoefer Welker	Overwatch CM	StudioH_Bar
American Energy Systems	CRTKL	HOK	P2S	Suffolk
Anchor Health Properties	CSULB Department of Design	Honeywell Building Solutions	Page Southerland Page	Surepods
Anderson Brule Architects	Cunningham Group Architecture	HOUSTON/TYNER ARCHITECTS	PARIC Construction	SWA Architects
API Partners	Cushman & Wakefield	Hunting and Sourcing Project Management	PARKER BROWN	Swain Architects
Apogee Consulting Group	DCY, LLC	Hunton Brady Architects	Path21 Architecture	SwiftEnvirons LLC
ARCH Design	Degenkolb Engineers	Hydam Construction	Payette Associates	Swinerton Builders
Architect of Photography	Design One Source	ido	Pepper Construction Company	Systems Source
Architects Alaska	DesignGroup	IMEG	Perkins Eastman Architects	Tagliaferri Architects, Inc
Architects Orange	DesignOneSource	IMH Healthcare	Perkins Eastman Black Architects Inc.	Taylor Design
Architectural Security Hardware Associates	Devenney Group	Integral Group	Perkins&Will	Techloli
architecture+	DLR Group	Itani Design Concepts	Pickering Associates	Terracon
Array Advisors	DMG Corporation	IWR North America	Pickett Design Associates	TGB Architects
Arup	DPR Construction	Jacobs	PNG Builders	The AMHigley Company
AS ONE INTERNATIONAL INC	DPR/GE Johnson	JB Design Group LLC	Polytechnique Environmental	The Art Around You
Aspen Street Architects, Inc.	dsk Architects	JE Dunn Construction	Pomarico Design Studio Architecture, PLLC	The Boldt Company
Austin Commercial	Dugmore & Duncan	Jensen Hughes	ProgressiveAE	The CARITAS Project
AWills Consulting	E4H Architecture	JLL	Project Management Advisors Inc.	The Clarity Studio LLC
Balfour Beatty	ECG Management Consultants	Joan S. Marshall and Associates	Ratcliff	The Haskell Company, formerly FreemanWhite
Ballinger	Eckroth Planning Group	Joe Ashcraft	Rayaec	The Innova Group
Bard Rao + Athanas Consulting Engineers LLC	EGG Office	Johns Manville	Ray-Bar Engineering Corp	The Korte Company
bcDESINGROUP	Elac	JPT Architects, P.C.	RBB Architects Inc	The Neenan Company
BDA Architects	Energy Systems	Kasian Architecture Ontario Incorporated	RBM Architecture	The Walsh Group
Bear Construction Company	EOC Management Inc.	Kent State University	Rendever	The Whiting Turner Contracting Company
Bernards	ESD	Kitchell Contractors	Rice Fergus Miller	TIE CONSULTING ENGINEERS
Bettisworth North	Evergreen Innovation Group	Komiske Consulting	RMA Geoscience, Inc.	TLC Engineering Solutions
BIOS	EwingCole	KPFF Consulting Engineers	RMF Engineering, Inc.	TOCCORP
Blue Space Interiors	EYP / Page	KPMB Architects	Robert D. Counter AIA	Trinity NAC
BN Builders	Fenagh, LLC	L&H Companies	Robin Constable Hanson	Tsow-Tun Le Lum Society
Boingo Wireless	FFE inc	Lavallee Brensinger Architects	Robins & Morton	Turner Construction
Boldt	Flad Associates	Lawrence Group	Rogers-O'Brien Construction	Unisource
Boulder Associates	Force Protect Security Consult	Leo A Daly	Ross & Baruzzini	University Mechanical & Eng. Contractors, Inc.
Bradley-Blewster	FreightTrain	Light Build Design	Rudolph and Sletten	University Mechanical and Engineering Contractors
Brandt Design Group, Inc.	FSN Medical Technologies	Lionakis	Ruhnau Clarke Architects	University of Toronto
Broaddus Planning	G Goldberg AIA, Architect	Little Diversified Architectural Consulting Inc.	RWDI	Vanir
BSA LifeStructures	GARTNER & associates	LP Interior Consulting	Safran Group	Vela Tech Holding
Buckl Architects	GBM Sales / Swiftwall	LPA Design Studios	Savely Healthcare Architects	Veregy
Bureau Veritas Technical Assessments LLC	Gensler	LS3P	SCI	Vertex Business Interiors
Burns & McDonnell	Gilbane Building Company	MA Architects, Inc.	Shanghai Kindly Medical Instruments Co., Ltd.	Virtual Energy Solutions
Byun Partners	Gilsanz Murray Steficek LLP	Marmon Mok Architecture	Shen Milsom & Wilke	VISTAM, Inc.
cla ARCHITECTS	GRAVES CONSTRUCTION	Mascari Warner Dinh Architects	Shepley Bulfinch	Vizzia Technologies
CallisonRTKL	Guidon Design	Massa Manufacturing & Assembly	Sheridan Group	W.G. Tomko Incorporated
Cambridge Holdings, Inc.	H2S Engineers Inc.	MASSA MULTIMEDIA ARCHITECTURE, PC.	Sherlock, Smith & Adams	Walsh Group
Cannon Design	Hall Render Advisory Services	Mazzetti	Shukla & Associates	Walter P Moore
Capital Engineering Consultants	Hammes	McCarthy Building Companies Inc	SignAgent	Ware Malcomb
CaroMont Health	Harati Solutions	Medrics Corp	Skanska USA Building	Westgroup Designs
CBRE	Hargrove Roofing	MESA Design Architects	Skyline Art	Whiting-Turner
CCI	Hasenstab Architects	Metro Flooring	SLAM Collaborative	Wright Group Architects
Chelsea Investment Corporation	Haskell	MHP Structural Engineers	Smith Group	WSP
CHOP's King of Prussia Hospital	HBS	Mike s Custom Flooring Inc.	Smith Seckman Reid	Yellow Brick Consulting Inc.
Chu & Dohn Associates	HCorp Ventures	Ministry of Health of Ukraine	Sound Management Group	Zakian Woo Architects
Cirba Solutions	HDR	MZN Construction	Southland Industries	ZGF Architects LLP
City of Hope Medical Center	Healthcare Design & Construction	NAC		
	Healthcare Realty			
	Heapy Engineering			

# ADVISORY BOARD

The Healthcare Facilities Symposium & Expo has the industry's largest, volunteer advisory board that helps shape the educational content, special features and programs. They ensure all event components include the most relevant information and reflect the trends and issues of the healthcare design, construction and management industry. This passionate group shows amazing dedication to the event and industry with their service.

## VICE PRESIDENT, SYMPOSIUM DIRECTOR



**Jenabeth M Ferguson**  
Vice President  
Symposium Director  
JD Events

## SPECIAL ADVISOR AND FOUNDER



**Wayne Ruga, PhD, FAIA, FIIDA, Hon. FASID**  
Founder and President  
The CARITAS Project

## BOARD MEMBERS



**James S Bicak**,  
Director of Sinai Tomorrow, Mount Sinai Hospital



**Susan Black**,  
Principal and Director, Perkins Eastman Black Architects Inc



**Krisianna Bock, MPH, FACHE, EDAC, CPHQ**, Senior Manager, Kaiser Permanente—Delivery System Strategy, Los Angeles Medical Center



**Neal Boothe**  
Principal/Senior Electrical Engineer, TLC Engineering for Architecture



**Orest Burdiak**,  
Principal Interior Designer, Dept. of Veterans Affairs



**Brenda M Bush-Moline, AIA, LEED AP, EDAC**, Senior Principal/Healthcare Leader, Stantec Architecture



**Robert S Callaghan**, Director of Business Development, Bear Construction Company



**Patrick M Casey, AIA**, Vice President of Facilities, Operation and Planning, University of Miami Health System



**Dan Cates**,  
Principal Northstar Management Company, LLC



**Gary Collins, AIA, NCARB**, Senior Director, Healthcare Virtual Energy Solutions



**Rolando Conesa, AIA, NCARB**  
Principal, Regional Design Leader, NELSON



**Kevin D Crook, AIA, AHCA**  
Strategic Facility Planning and Project Management, KD Crook Healthcare Consulting



**Tama Duffy Day, FIIDA, FASID, FACHE** Principal and Global Senior Living Practice Leader, Gensler



**Heather Fennimore**,  
President, Global Healthcare, Humanscale



**Jeremy Fortier FACHE SASHE PMP CHC LEED AP**, Executive Director, Development & Construction Insight, LLC



**Jessica Gutierrez-Rodriguez**,  
Executive Director, Facilities Management & Operations, University of Texas Health San Antonio



**Christopher Haedt**  
Designer, Project Architect, DesignGroup



**Mary Ann Lukowicz, BSCE, LEED AP**, Project Executive - Healthcare, The Walsh Group



**John P Marshall**, Principal Advisor, Hall Render Advisory Services



**Don Marshall**, Vice President/MHHS Program Manager, Broaddus & Associates



**Brian McFarlane**,  
Senior Vice President, Rogers-O'Brien Construction



**Ann McGauran**, Executive Director of Tenant Services and Facility Management, Department of General Services



**Lynn Murphy**, Associate Vice President, UK HealthCare Facilities Planning



**Victoria Numbers**,  
Senior Associate  
Four Point Design



**Grant Ramsay**, Vice President, Director of Technology Southeast, Osborn Engineering



**Cathy Richter**, Vice President Director of Business Development, Health, HKS



**Stacy Robben**, Executive Vice President, Chief Marketing Officer, The Boldt Company



**William Scrantom**,  
Principal,  
Arup



**Ari Tinkoff, PE**, Associate Principal, HVAC Engineer, Bard, Rao + Athanas Consulting Engineers, LLC



**Vladislav Torskiy**, Health and Wellness Practice Leader, ProgressiveAE



**David J Vitka, R.A., M. Arch, M.B.A.**, Vice President, Facility Planning Catholic Health System



**Donna Ware**, Executive Director of Planning and Design, BJC HealthCare

## EMERITUS BOARD



**Deb D'Agostino**  
President, P4H, Inc.



**Bruce Komiske**  
Owner, Komiske Consulting LLC



**Bruce Raber**  
Architect, Purveyor of Wisdom





# AUSTIN, TX

## HEALTHCARE CONSTRUCTION MARKET

- Healthcare is one of Austin's largest and fastest-growing industries. The region is home to more than 4,200 healthcare employers representing approx. 3,700 companies that embody diverse segments of the industry.
- The Dell Medical School at The University of Texas at Austin is a new teaching hospital that will become Central Texas' gateway to the future of care. With Dell Seton Medical Center at The University of Texas, Austin will have more specialists for a growing population; sustain high quality care for all, with a special concern for the vulnerable; discover new treatments, and enjoy economic growth.
- Seton Healthcare Family, a regional health care system, and Central Health, a public health care district, a new teaching hospital will be constructed adjacent to the new Dell Medical School
- St. David's HealthCare recently announced a \$275 million investment in the Central Texas area
- Texas has \$15.8 billion in the healthcare construction pipeline according to Dallas News
- Texas Society for Architects has over 6,500 members
- Texas is one of top 3 healthcare markets in the country with more than 600 hospitals
- Top hospitals in the country such as Houston Methodist Hospital, Memorial Hermann-Texas Medical Center and Baylor University Medical Center

## THE DESTINATION!

- One of The Best Cities in North America by Travel + Leisure
- Named America's Next Boomtown by Forbes
- Austin was named one of The 13 Hottest US Cities for 2016 by Business Insider.
- Austin ranked #5 on The Top 25 Future-Ready U.S. Cities by PCMA Convene

- There are more than 200 restaurants, with a wide culinary range and many award-winning options.
- More than 250 live music venues
- Austin ranks in the top 20 large cities with the most vibrant art community in America, according to SMU's National Center for Arts Research.

## AUSTIN IS ACCESSIBLE!

- Austin-Bergstrom International Airport - «Best Domestic Airport Worldwide» and #16 Most Affordable Airport in the U.S.
- ABIA located only 7.5 miles from downtown, less than a 15 minute drive
- 50+ nonstop flights daily including international flights from London, Frankfurt, Cancun, Guadalajara and Toronto
- San Antonio is 74 miles, Houston is 147 miles and Dallas is 181 miles, Fort Worth is 188 miles
- The Austin Amtrak station is located on North Lamar Boulevard. Servicing the Texas Eagle route, trains run daily between Chicago and San Antonio and three times per week between Chicago and Los Angeles.
- Austin's Capital MetroRail service runs on 32 miles of existing freight tracks between Leander and downtown Austin. The Red Line services nine stations, including a stop in front of the Austin Convention Center. Each of the six vehicles holds 200 passengers and offers free wireless internet service

## THE VENUE!

- The Austin Convention Center was named one of the Best Convention Centers by Smart Meetings
- Free WIFI throughout the entire facility
- The Austin Convention Center is a LEED® Gold certified building
- The convention center has a convenient downtown location, between the shores of Lady Bird Lake and historic Sixth Street. It has easy access to I-35 and is a short distance from 6,500 downtown hotel rooms