



HEALTHCARE  
FACILITIES  
symposium and expo

September 24-26, 2024  
Austin Convention Center  
Austin, Texas

# EVENT GUIDE

Connecting the Next Generation of Healthcare



Inside:  
Event Schedule  
Session Details/Locations  
Special Events  
Exhibitor Profiles  
Mobile App Info

[hcarefacilities.com](https://hcarefacilities.com)

Keep up to date on: #HFSE24



[facebook.com/  
hcarefacilities](https://facebook.com/hcarefacilities)



[linkedin.com/company/  
healthcare-facilities-  
symposium-&-expo](https://linkedin.com/company/healthcare-facilities-symposium-&-expo)



## RUGGEDIZED TOUCHLESS ACCESS CONTROL



### Introducing iRox LR™ For Behavioral Healthcare Facilities

Designed to meet behavioral healthcare access control requirements, iRox LR features a low profile, vandal and ligature resistant faceplate with bezel. The new iRoxPro LR supports HID mobile credentials, including employee badge in Apple Wallet.



- Vandal and Ligature Resistant Design
- Reads Seos®, iCLASS SE® and multiCLASS SE® Credentials
- Wiegand or OSDP Secure Channel
- Supports HID® Mobile Access® Solutions
- All Weather IP66 Rated
- Stainless Steel Construction
- Easy to Clean and Sanitize
- Up to 3-inch Read Range
- Stainless or Black Finish
- Custom Logo and Graphics Available
- Designed and Manufactured in the USA

**HFSE BOOTH #203**

**KEYLESS.COM | 1-800-KEYLESS**

**WIELAND**  
healthcare

See all new options on  
the Accord Recliner  
in space 305.

infused with more





## Welcome back to Austin!

The JD Events team, along with our dedicated Symposium Advisory Board, warmly welcomes all attendees, speakers, exhibitors, sponsors, partners, and press members to the 37th Annual Healthcare Facilities Symposium & Expo.

Over the next two and a half days, there is a lot happening. While this guide is helpful, the mobile app is your best resource for staying up to date with the most current information. Check page 6 for instructions on accessing the mobile app. Please also take the time to complete the session evaluations on the app, as your feedback is invaluable for planning future events and providing feedback to our speakers. And of course, take part in our Passport Program which is your chance to win \$1000.

Make sure to engage with your fellow attendees this week. Use the time between sessions and during receptions and parties to make new connections and renew old friendships. Grab one of our fun ribbons to use as an icebreaker in conversations. You will also see our second class of emerging leaders' scholarship winners at this year's event. Please make them feel welcome and included, as they are our future industry leaders.

I encourage you to attend a session that might not seem directly related to your discipline or engage with an exhibitor whose products or services are outside your area of expertise. This week is your opportunity to expand your knowledge and understand the entire design team's role. This is what makes the Symposium unique from other industry events – the engineer sitting next to the art specifier or the architect from a large urban health system engaging with a facility manager from a small, rural community hospital.

The JD Events team is here to help answer your questions or listen to suggestions. You'll find us in blue polo shirts, and our job is to ensure you have the best event experience possible, so let us know how we can assist you.

Enjoy this week and mark your calendars for September 24-26, 2025, in San Diego, California!



Best,

**Jenabeth Ferguson**  
**Vice President, Symposium Director**

### Inside ...

Schedule-At-A-Glance.....	4-5
General Information/App/Map.....	6-7
Advisory Board.....	9
Symposium Distinction Awards.....	12
Networking Events.....	14
Design Solutions Theaters.....	15
Session Descriptions.....	16-25
Exhibit Hall Map/Index.....	26-27
Exhibitors.....	28-38


**HEALTHCARE  
FACILITIES**  
 symposium and expo

A production of

**JDEvents**

1300 Post Road, Suite 209, Fairfield, CT 06824  
 Phone: 203-307-2696  
[www.hcarefacilities.com](http://www.hcarefacilities.com) • [www.jdevents.com](http://www.jdevents.com)

HFSE Event Guide published by Mayeroff and Associates,  
 2724 W. Coyle Avenue, Chicago, IL 60645; 773-761-0868; [jerry@mayeroff.com](mailto:jerry@mayeroff.com)





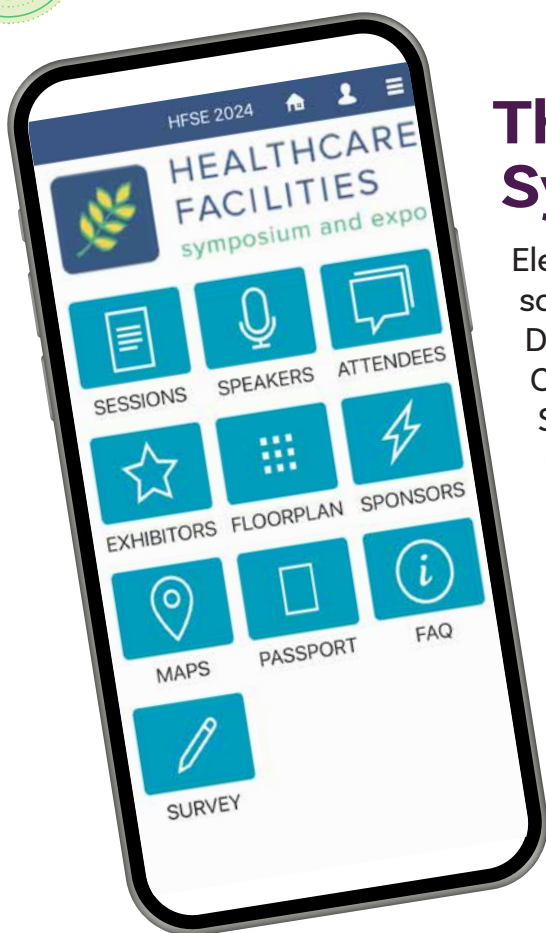
TUESDAY, SEPTEMBER 24	7:00 AM - 6:00 PM	Registration		
	7:00 AM - 8:30 AM	Networking Breakfast - <b>Ballroom ABC</b>		
	8:30 AM - 9:45 AM	Welcoming Ceremony and Opening Keynote: Dr. Esmaeil Porsa, Harris Health System - <b>Ballroom ABC</b>		
		<b>ROOM 9C</b>	<b>ROOM 9AB</b>	<b>ROOM 8</b>
	10:00 AM - 11:00 AM	A01 - The Future of Orthopedic Centers: Delivering Comprehensive Care	B01 - Operational Planning 101 – How creating a plan is key to the success of an organization	C01 - Architectural Avenger: Championing Health Equity in a Safety-Net Hospital
	11:00 AM - 11:15 AM	Recharge Break		
	11:15 AM - 12:15 PM	A02 - Four Decades of Intensive Care Unit Design Evolution with Thoughts for the Future	B02 - Don't Get Sidelined by the Guidelines: How to Strategically Interpret, Clarify, and Apply Health Care Design Requirements	C02 - Strategies for Improving Healthcare Staff Recruitment and Retention with Environmental Enhancements
	12:15 PM - 1:30 PM	Awards Luncheon - <b>Ballroom ABC</b>		
	1:45 PM - 2:45 PM	A03 - The Value of a Quality Art Program & How to Achieve It	B03 - Measuring and Managing: Understanding Square Feet and Area Calculation	C03 - Take 3: Design Innovations in Post Acute Care
	2:45 PM - 3:00 PM	Recharge Break		
WEDNESDAY, SEPTEMBER 25	3:00 PM - 4:00 PM	<b>Special time: 2:45 PM</b> - A04 - Assessing and Impacting the Healthcare Experience Across the Full Continuum of Care - <b>Special Location: Ballroom ABC</b>	B04 - The Not So Standard Standard – Building a framework for Room Prototypes and Clinical Operations	C04 - Disaster Recovery and Future Planning for the Governor Juan F. Luis Hospital after Hurricane Maria in the US Virgin Islands
	4:00 PM - 6:00 PM	<b>Grand Opening of Exhibit Hall and Symposium Party - Exhibit Hall</b>		
	7:00 AM - 3:00 PM	Registration		
	7:00 AM - 8:00 AM	Networking Breakfast - <b>Ballroom ABC</b>		
	8:00 AM - 9:00 AM	A05 - Demystifying the Co-location and Dual Licensure of Ambulatory Surgery Centers and Surgery HOPD's	B05 - Texas Healthcare: Epicenter of Growth and Development	C05 - A Holistic Approach to Emergency and Behavioral Health Care Using the EmPATH Model
	9:15 AM - 10:30 AM	Keynote: AI & the Future of Healthcare Systems & Spaces, Dan Chuparkoff, Innovation & A.I. Expert - <b>Ballroom ABC</b>		
	10:30 AM - 3:00 PM	Exhibit Hall Open		
	10:45 AM - 2:45 PM	Design Gallery Solutions Theater - <b>Exhibit Hall</b>		
	11:30 AM - 1:00 PM	Networking Lunch on <b>Exhibit Floor</b>		
	1:00 PM - 2:00 PM	A06 - Revolutionizing Patient Care: A Smart Room Design Innovation Playbook	B06 - Delivering Healthcare to UNC Health Blue Ridge: Master Planning Two Campuses	C06 - Transforming Pediatric Mental Health: An Innovative Design and Care Model
THURSDAY, SEP. 26	2:00 PM - 3:00 PM	Ice Cream Social on <b>Exhibit Floor</b>		
	3:00 PM - 4:00 PM	A07 - Use it or Lose It: Mobility to Reduce Falls	B07 - Setting the Bar: Developing a Prototype for Next-Generation Design Standards	C07 - Evolving Crisis Care: Deploying a Behavioral Health Crisis Stabilization Centers Nationwide
	4:00 PM - 4:15 PM	Recharge Break		
	4:15 PM - 5:15 PM	A08 - Like Family: A Look at Senior Healthcare in Close Knit Community	B08 - Site, culture, and state-of-the-art planning: the making of a landmark regional replacement hospital	C08 - Metrocare, Transforming Mental Health Outcomes & Communities through the Behavioral Health Innovation Center
	6:00 PM - 7:30 PM	Happy Hour – Speakeasy		
	7:30 AM - 12:30 PM	Information Desk Open		
	7:30 AM - 8:30 AM	Networking Breakfast - <b>Ballroom ABC</b>		
	8:30 AM - 9:30 AM	A09 - Under Pressure: Upgrading HVAC Systems When the Heat is On	B09 - Designing on the Edge; How a Team Aligned to Deliver on Target in Turbulent Economic Times	C09 - Beyond Design & Construction - Lessons from Women's and Children's Hospital
	9:30 AM - 9:45 AM	Recharge Break		
	9:45 AM - 10:45 AM	A10 - Repurposing Assets and Design-Build Delivery, Key to Meeting Market Demand	B10 - From Bedside to Building: Nursing's Powerful Influence on Design Through Transition	C10 - Preparing your hospital for a crisis
	10:45 AM - 11:00 AM	Recharge Break		
	11:00 AM - 12:15 PM	Closing Keynote - Learning and Designing: The Source of Agency to Change the World, Tama Duffy Day, Gensler - <b>Ballroom ABC</b>		



ROOM 6			ROOM 5			ROOM 4		
D01 - Hear No Evil, See No Evil: Exploring How Light & Sound Impacts the Patient Experience			E01 - 9-1-1, What's Your Emergency? Innovation to the Rescue, Cedars-Sinai ED			F01 - We Are the World: Harmonizing Goals for Optimal Project Outcomes		
D02 - Healthcare Decision-Making Beyond Matterport			E02 - Designing for a First-in-the-World Proton Therapy Cancer Treatment System			F02 - How Can the Mental Healthcare Design Process Lead to Better Treatment Programs, Built Environments, and Service User Outcomes?		
D03 - Collaboration for Ensuring Safety in an Active Hospital During Construction			E03 - ASHRAE Decarbonization Design Guide			F03 - Getting to the HEART of the Matter: Discerning The Absolutely Essential from The Merely Important		
D04 - Participatory Design Yields Inclusivity at Gillette Children's			E04 - American College of Healthcare Architects Exam Prep Seminar			F04 - Let's Build a Better World Together: A Workshop to Explore How to Create a New and Better Future for Healthcare and Design		
D05 - Building Healthier Communities: A Deep Dive into Designing Population Health Centers for Inclusive Wellness			E05 - Through the Lens: Integrating Biophilic Elements into a Nebraska Medicine Specialty Clinic			F05 - Creative Collaborations – How do we create a new working model?		
D06 - Community Wellness - Coming soon to a neighborhood near you!			E06 - Environmental Justice: Henry Ford Health's Pledge to the US Justice 40 Initiative			F06 - Culturally Inclusive Care: Healthcare Design for Black Communities		
D07 - Improving Access to Care in Medical Deserts			E07 - Health Care Microgrids can Lower Utility Costs, Meet Sustainability Goals and Increase the Resilience of your Facility			F07 - CADRE Research: Developing A Blueprint for Mitigating Nurse Burnout		
D08 - Transforming Service Delivery using Robotics- Demonstrating the role of AI in Enhancing Safety & Security			E08 - Transforming All India Institute of Medical Sciences (AIIMS): Creating a Sustainable Model for Healthy Urban Living			F08 - Practical Design Research: How Visibility Can Enhance Communication and Safety in Healthcare Facilities		
D09 - From Obstacle to Opportunity: SAC Health's Adaptive Reuse Story			E09 - Transforming Oncology Care: Emory's IFD Journey and Impact					
D10 - Patient Access Impact – Virginia Design Innovations			E10 - Beyond Boundaries: Redefining Excellence in Emergency Services through Freestanding Emergency Departments					



**For the most up-to-date session descriptions, and complete speaker information, download the Healthcare Facilities Symposium & Expo Mobile App. See page 6 for details.**



## The Healthcare Facilities Symposium & Expo Mobile App

Elevate your experience! Search for sessions, build your schedule, find exhibitors, and network with fellow attendees. Download the myShowAPP in the Apple or Google Store. Click on Find an Event and search for Healthcare Facilities Symposium & Expo.

You will need to log in to view the attendee list, save your schedule and create favorites.

Sponsored by:



Having Trouble? Go to registration or ask anyone from show management for help. Show Management will be wearing blue polos with the HFSE logo.

## TAKE PART IN THE SYMPOSIUM PASSPORT PROGRAM... CHANCE TO WIN \$1000

Take part in the fun Passport Program networking game for a chance to win \$1,000! Meet with each participating company at their booth in the exhibit hall, learn about their company and find out their Passport ID Number. Once you've met with all companies participating, you'll be entered in the drawing where one lucky person will win \$1,000!

**How to Play:** The Passport Program networking game is taking place on-site at HFSE in Austin in the Exhibit Hall on Tuesday, September 24, 2024 and Wednesday, September 25, 2024. To play, attendees launch the Mobile App, then select Passport Program from the navigation menu, to view the list of exhibiting companies participating. Attendees meet with participating companies at their booth to speak with them and find out their unique Passport ID Number needed to complete your entry in the Mobile App. Attendees must visit all companies listed under the Passport Program to be entered in the giveaway, by 2:30 p.m. on Wednesday, September 25, 2024. The winner will be announced in the Exhibit Hall in Design Solutions Theater Two at 2:50 p.m. on Wednesday, September 25, 2024.



## CEUs:

Earn Continuing Education Units from these HFSE Partners at the 2024 Event.

### Interior Designers:



IDCEC recognizes the Healthcare Facilities Symposium & Expo sessions as qualifying for continuing education credits. Each hour of educational content is equal to 0.1 CEU. For credit: obtain the IDCEC form at the Information Desk/Registration. Have your session(s) stamped by a room monitor as you leave each session and mail it to the address specified on the form.

**Architects:** The Symposium is an AIA Registered Provider.



Attendees may earn 1 Learning Unit per educational hour. For credit, obtain a CEU form at the Information Desk onsite at the event. Keep track of the sessions you attend and turn in your form at the information desk at the end of the show.

### EDAC:

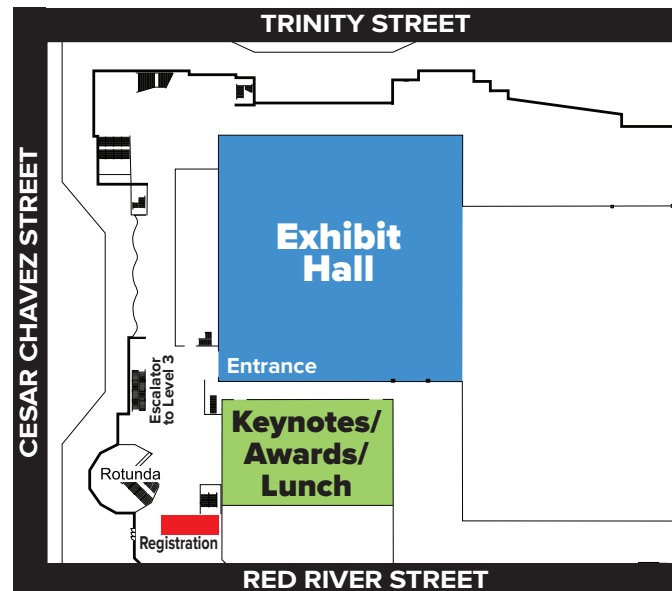
EDAC Certified Individuals, obtain a CEU form at the Registration Desk onsite at the event. Keep track of the sessions you attend. You will need to retain the form for your records. You will need it to report courses through Scantron when you are due for renewal.



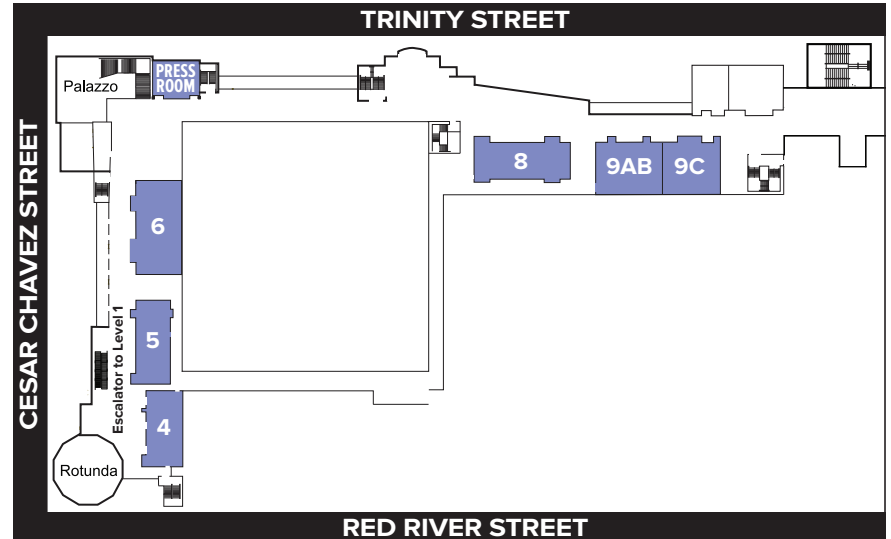
Many sessions of the 2024 program will qualify for Health, Safety and Welfare (HSW). That means that you can get all 8 of your HSW credits for the year at the Healthcare Facilities Symposium & Expo! Attendees may earn 15.75 continuing education units by attending one conference session in every time bank offered plus a facility tour.

## Symposium Map

### Level 1: Exhibit Hall & Keynotes/Lunch



### Level 3: Session Rooms



## Conference Proceedings:

Copies of presentations may be accessed through the mobile app under each session.

Visit page 6 with info to download. Must be logged in and click on each session to view the presentation.



 Mohawk Healthcare



**Booth #414**

Learn more about Medella Fleck, Hues and Well  
with M-Force Ultra Technology from **Mohawk Group**

## Fleck, Hues & Well

The go-to homogeneous sheet in healthcare.  
**In stock and ready to ship.**

# DESIGNING FOR OPTIMAL PATIENT CARE & OUTCOMES

## Partner with **STERIS Healthcare Design Services**

- Design Development
- Capacity Assessment
- Construction Documentation

**VISIT US AT BOOTH #107**



 **STERIS**





## Healthcare Facilities Symposium Advisory Board

We'd like to thank our esteemed Advisory Board for their hard work and dedication to certify that educational sessions, special features and programs all provide the most relevant information and reflect the trends and issues of the healthcare design, construction and management industry.



**Jenabeth M. Ferguson**  
Vice President,  
Symposium Director  
JD Events



**Gary W. Collins, AIA, NCARB**  
Senior Director,  
Healthcare  
Virtual Energy Solutions



**Brian McFarlane**  
Vice President  
Rogers-O'Brien  
Construction



**Vladislav Torskiy, MHA, ACHE, AORN, IAIA, Lean Healthcare CP**  
Principal | Regional  
Leader of Healthcare  
HOK



**Special Advisor/  
Founder  
Wayne Ruga, PhD, FAIA, FIIDA, Hon. FASID**  
Founder and President  
The CARITAS Project



**Rolando Conesa, AIA, NCARB**  
Principal- Regional  
Design Leader  
NELSON



**Ann McGauran AIA, MMHC**  
Tennessee State  
Architect  
State of Tennessee



**David J. Vitka, RA, M Arch, MBA**  
Vice President, Facility  
Planning  
Catholic Health



**James S. Bicak**  
SVP Facilities  
Management,  
Construction & Campus  
Transformation  
MetroHealth



**Kevin D Crook, AIA, AHCA**  
Strategic Facility Planning  
and Project Management  
FFE, Inc.



**Lynn Murphy**  
Associate Vice  
President  
UK HealthCare  
Facilities Planning



**Mike Viviano**  
Principal and Project  
Director  
Northstar Management  
Co., LL



**Susan Black**  
Principal and Director  
Perkins Eastman Black  
Architects Inc.



**Tama Duffy Day, FIIDA, FASID, FACHE**  
Principal and Global  
Senior Living Practice  
Leader  
Gensler



**Victoria Numbers, RID, MSIA**  
Senior Associate  
Four Point Design



**Donna Ware**  
Executive Director of  
Planning & Design  
BJC Health System



**Krisianna Bock, MPH, FACHE, EDAC**  
Principal  
HKS Architects



**Jeremy Fortier FACHE SASHE PMP CHC LEED AP**  
Executive Director  
Development &  
Construction Insight, LLC



**Rachel Opore-Sem**  
Architectural Designer  
architecture+



**Neal Boothe, PE**  
Principal/Senior  
Electrical Engineer  
TLC Engineering  
Solutions



**Jessica Gutierrez-Rodriguez MSMOT**  
Senior Executive  
Director of Clinical  
Facilities  
University of Texas  
Health San Antonio



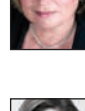
**Grant Ramsay**  
Vice President,  
Director of Technology  
Southeast  
Osborn Engineering



**Orest Burdiak**  
Principal Interior  
Designer  
Department of  
Veterans Affairs



**Christopher M. Haedt, AIA, NCARB, ACHA, LEED AP BD+C**  
Designer, Project  
Architect,  
DesignGroup



**Cathy Richter**  
Vice President  
Director of Business  
Development, Health  
HKS



**Brenda M. Bush-Moline, AIA, LEED AP, EDAC**  
Senior Principal/  
Healthcare Leader  
Stantec Architecture



**Mary Ann Lukowicz BSCE, LEEP AP**  
Project Executive -  
Healthcare  
The Walsh Group



**Stacy Robben**  
Executive Vice  
President, Chief  
Marketing Officer  
The Boldt Group



**Robert S. Callaghan**  
Director of Business  
Development -  
Healthcare  
BEAR Construction  
Company



**Don Marshall**  
Vice President / MHHS  
Program Manager  
Broadus & Associates



**William Scrantom**  
Principal  
Arup



**Patrick M. Casey, AIA**  
SVP/Facilities  
Construction &  
Systems Engineering  
Harris Health System



**John P. Marshall**  
Principal Advisor  
Hall Render Advisory  
Services



**Ari Tinkoff, PE**  
Principal, HVAC  
Engineer, Bard, Rao +  
Athanas Consulting  
Engineers, LLC

### Emeritus Board



**Deb Groner D'Agostino**  
President  
P4H, Inc.



**Bruce Komiske**  
Owner  
Komiske Consulting  
LLC



**Bruce Raber**  
Architect, Purveyor  
of Wisdom



# News, trends & more!

Stay in the loop with Medical Construction & Design magazine



Join the  
conversation  
at [x.com/  
mcdmag](https://x.com/mcdmag)



Join the MCD  
Connection at  
[mcdmag.com/  
linkedin](https://mcdmag.com/linkedin)



Get your FREE  
subscription  
or renew at  
[mcdmag.com/  
subscribe](https://mcdmag.com/subscribe)

[mcdmag.com](https://mcdmag.com)

To advertise or for more information, call 480-361-6300.



## SPONSORS



HEALTHCARE  
FACILITIES  
symposium and expo

### PLATINUM SPONSOR



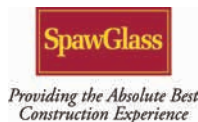
### GOLD SPONSOR



### SILVER SPONSORS



### SPONSORS



### GOLD MEDIA SPONSOR



### MEDIA SPONSORS



### ASSOCIATION PARTNERS







# THE SYMPOSIUM DISTINCTION AWARDS

Sponsored by:



## Thanks to the 2024 Symposium Distinction Awards Judges:

James Atkinson  
Vice President and Director, Healthcare  
Design and Planning  
HDR, Inc

Marcus A. Budaus, AIA, ACHA, LEED® AP  
Associate Principal / Senior Vice President  
HKS, INC.

Gary W. Collins, AIA, NCARB  
Senior Director, Healthcare  
Virtual Energy Solutions

Rolando Conesa AIA NCARB  
Principal  
NELSON

Amy Douma, AIA, NCARB, and LEED AP  
Vice President  
HGA Architects and Engineers

*Judges do not score categories in which their company  
has submitted an entry*

The annual program recognizes design teams, projects and individuals who have made a profound contribution to the healthcare design industry. The program accepts submissions of all types and sizes of patient care-related facilities. In addition it recognizes the best and most innovative new products within the healthcare design & construction industry.

## Awards Categories and Winners:

### Individual Award

Dave Redemske  
HDR

### George Pressler Under 40 Award

Judith Kanera  
HDR

### Team Award

Children's Wisconsin - Skywalk Building  
The Boldt Group

### Adaptive Reuse Award

Cooper University Health Care - Moorestown Campus  
Array Architects

### User-Centered Award

Malone Family Tower  
Perkins+Will

### Most Innovative Product

Cove  
DIRTT and HKS

### Most Sustainable Product

Lotus Casegoods Collection  
Stance Healthcare

### Architect's Choice Product

Cove  
DIRTT and HKS



## Facility Tours

Monday, September 23, 2024 • 1:00 PM - 5:00 PM

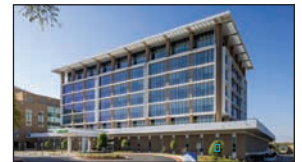
### Facility Tour 1: Texas Children's Hospital North Austin Campus

Meet at HFSE Registration on Level One of Austin Convention Center



### Facility Tour 2: Medical Park Tower located on Ascension Seton Medical Center

Meet at HFSE Registration on Level One of Austin Convention Center



## Healthcare Providers Only Roundtable

Monday September 23, 2024 • 4:00 PM - 6:00 PM

**Pre-registration is required**

Location: Room 4ABC. This session will only be open to those attendees employed by hospitals or health care systems.

## SCHOLARSHIP PROGRAM

### Symposium Emerging Leaders Scholarship Program

Welcome to the second class of the Symposium Emerging Leaders Scholarship Program. The objective of the program is to give recognition to those individuals with less than 10 years (nonconsecutive) of experience in healthcare design and construction including research and/or education.

You will notice this year's recipients have Emerging Leaders ribbons on their badges. Please make them feel welcome and engaged as they are our future leaders. The Symposium is thrilled to have started this program to encourage the next generation to continue the work of the past 37 years.

For information on the 2025 Symposium Emerging Leaders Scholarship Program please be on the lookout at <https://hcarefacilities.com/elp> starting in March 2025.

#### Symposium Emerging Leaders Scholarship recipients:

Jon Amari, DLR Group  
Nowell Ancheta, PE, Stantec  
Maithili Pravin Awasarikar, Stantec  
Jill Barbaro, MHA, Array Advisors  
Yoselim Bravo, Skanska  
Melissa Brown, Walsh Group  
Kevin Cheng, City of Hope  
Kailey Devereaux, Eckenhoff Saunders  
Kinsey Diomedi, Shepley Bulfinch  
Juan Carlos Duarte, HGA  
Jenny Ellison, Devenney Group  
Hayden Erdman, Bostwick Design Partnership

Harold Gallego, Spring Branch Community Health Center  
Anita Hamalainen, White River Junction VA Medical Center  
Carrie Henderson, Harris Health  
Becky Holden, Kaizen Design  
Kyle Houser, TLC Engineering Solutions  
Brett Jacobs, Architecture Plus  
Emily Johnson, Perkins&Will  
Samantha Kanyi Rayford, BR+A  
Katie Khanna-Patel, Kitchell CME  
Megan Klingelhofer, Nationwide Children's Hospital

Rachel Lee, CO Architects  
Rebecca Manhardt, Mayo Clinic  
Kashif Masoud, PAGE  
Will Maxwell, Smith Seckman Reid  
Nina McCormick, Michael E. DeBakey Veterans Affairs Medical Center  
Hunter Miller, NAC Architecture  
Hossein Mirzajani, HKS  
Jason Moss, AKF Group  
Cally Niess, INVISION Architecture  
Y Pham, SmithGroup  
Steve Stidham, FFE  
Yaolong Wang, HDR  
Jack Warmka, JE Dunn Construction

# NETWORKING EVENTS



HEALTHCARE  
FACILITIES  
symposium and expo

## TUESDAY, SEPTEMBER 24, 2024

7:00 AM - 8:30 AM

### Networking Breakfast

Conference Attendees Only

**BALLROOM ABC**

Start with your day with breakfast and chatting with your fellow attendees.

Sponsored by: 

11:00 AM - 11:15 AM

### Recharge Break

Conference Attendees Only

Chat with speakers and your fellow attendees between sessions.

Sponsored by:   
Rogers-O'Brien  
CONSTRUCTION

12:15pm - 1:30pm

### Awards Luncheon

Conference Attendees Only

Join us for lunch as the Symposium Distinction Awards and the Founder's Award are presented. We will also kick off our 2024 raffle.

Sponsored by:   
MEDICAL CONSTRUCTION & DESIGN

2:45 PM - 3:00 PM

### Recharge Break

Conference Attendees Only

Recharge your batteries before the next session.

Sponsored by:   
Rogers-O'Brien  
CONSTRUCTION

4:00 PM - 6:00 PM

### Grand Opening of Exhibit Floor and Symposium Party

Open to All Attendees!

Let's celebrate 37 years of the Symposium during our grand opening of the exhibit floor and the Symposium Party. Drinks and appetizers will be offered in a fun, lively setting. This is a great way to network and engage with fellow attendees, exhibitors, and the entire HFSE community and end your first day of the Symposium! Our special raffle will take place during the Symposium Party. Attendees can buy raffle tickets for the chance to win a variety of prizes ranging from Amazon Gift Cards to Kate Spade bags to Apple Products to Sports Tickets. This year's beneficiary of the raffle will be For Every Child, Inc which is a charity based in Austin. Their main initiative is called Hope Totes which focuses entirely on children arriving in emergency shelters or safe houses and those entering the foster care system after being removed from abuse or neglect. Each year, they assemble and donate as many Hope Totes as they can to children entering emergency shelters and the foster care system. Learn more at <https://www.hopetotes.org/>

Sponsored by: 

## WEDNESDAY, SEPTEMBER 25, 2024

7:00 AM - 8:30 AM

### Networking Breakfast

Conference Attendees Only

**BALLROOM ABC**

Start with your day with breakfast and chatting with your fellow attendees.

11:30 AM - 1:00 PM

### Networking Lunch on Exhibit Floor

Open to All Attendees!

Enjoy your lunch with fellow attendees on the exhibit floor. Be sure to check out the tables hosted by



2:00 PM - 3:00 PM

### Ice Cream Social on Exhibit Floor

Open to All Attendees!

Visit the exhibit floor for an ice cream treat and to thank the exhibitors for their support of the Symposium.

Sponsored by:  **STERIS**   
Proven. Flooring. Experiences.

4:00 PM - 4:15 PM

### Recharge Break

Conference Attendees Only

Recharge your batteries before the next session.

Sponsored by:   
Rogers-O'Brien  
CONSTRUCTION

6:00 PM - 7:30 PM

### Happy Hour

Open to All Attendees!

Join your fellow attendees, speakers and exhibitors for a Happy Hour before heading out to enjoy Austin! Drinks will be provided and light appetizers.

Location: Speakeasy, 412 Congress Ave D, Austin, Texas

Sponsored by:  **ROBINS & MORTON**  **IMEG** 

## THURSDAY, SEPTEMBER 26, 2024

7:30 AM - 8:30 AM

### Networking Breakfast

Conference Attendees Only

**BALLROOM ABC** Start with your day with breakfast and chatting with your fellow attendees.

9:30 AM - 9:45 AM

### Recharge Break

Conference Attendees Only

Recharge your batteries before the next session.

Sponsored by:   
Rogers-O'Brien  
CONSTRUCTION

10:45 AM - 11:00 AM

### Recharge Break

Conference Attendees Only

Recharge your batteries before the next session.

Sponsored by:   
Rogers-O'Brien  
CONSTRUCTION





## DESIGN SOLUTIONS THEATERS

Exhibit Floor

Wednesday, September 25, 2024

Open to All Attendees!

Our design team galleries come alive in these sessions where you hear about the projects featured. This year there will be two design solutions theaters so double the chance to hear about the latest projects in this exciting format!

## Design Solutions Theater One

10:45 AM – 11:00 AM **PAYETTE**

**Adaptive Reuse in Healthcare - Boston Children's Hospital, Waltham**

Speaker: Joshua Ajayi, AIA, Architect, Payette

11:15 AM – 11:45 AM **PERKINS&WILL**

**How to Deal With a "Raised Access Floor" in an Adaptive Re-Use Renovation**

Speakers: Jeffrey Dreesman, AIA, LEED AP BD+C, Director of Medical Planning, Perkins&Will; Anthony Mistretta, RN, MS, HC Ops+Strat Plan Exec Principal, Perkins&Will

11:45 AM – 12:00 PM **STANTEC**

**Analogue + AI: Prototyping Mental Health Environments with Generative Design**

Speakers: Stephen Parker, AIA, NOMA, NCARB, LEED AP, Mental & Behavioral Health Planner/SME; Jon Sell, Principal, Mental & Behavioral Health Planner/SME

12:30 PM – 12:45 PM **DLR GROUP**

**The Evolution of the Bedtower**

Speakers: Jonathan Miller, Healthcare Client Leader, DLR Group; Mark Tiscornia, Global Sector Leader for Healthcare, DLR Group

1:15 PM – 1:30 PM **ARCADIS**

**Putting A Magnet Between A Rock and A Hard Place**

Speakers: Brian Cravens, AIA & Darren Chen, Assoc. AIA | LEED AP BD+C, Arcadis

1:45 PM – 2:00 PM **e4h Environments for Health Architecture**

**How Simulation & Positive Distraction Improve Pediatric Outcomes**

Speaker: Candice Barter, AIA, NCARB, EDAC, Principal and Office Director, E4H Environments for Health Architecture; Julie Martinez, AIA, RID, LSSGB, Senior Project Manager, E4H Environments for Health Architecture

2:15 PM – 2:30 PM **LEO A DALY**

**Improving the Healthcare Experiences for Patients-Of-Size: Innovations at Saint Francis Health System**

Speaker: Lori McGilberry, Senior Associate, Market Sector Leader, Healthcare, LEO A DALY

2:45 PM – 3:00 PM **PERKINS EASTMAN**

**Reimagining Hospitals Worldwide: Best Practices for Diverse Healthcare Facilities**

Speaker: Manjiri Paprikar, AIA, LEED AP, Senior Planner and Programmer, Perkins Eastman

## Design Solutions Theater Two

11:00 AM – 11:15 AM **HKS**

**Engaging the Community to Reshape the Future of Healthcare**

Speaker: Whitney Fuessel, AIA, RID, ACHA, LEED AP, LSSYB, Regional Practice Director, Health, HKS, Inc.

11:30 AM – 11:45 AM **Array Architects**

**Healthcare Has Become Incredibly Complex. We Make it Simpler**

12:00 PM – 12:15 PM **EWING COLE**

**The challenges of weaving natural environments into the healing process**

Speaker: Saul S. Jabbawy, Principal Regional Director of Design, EwingCole

1:00 PM – 1:15 PM **PAGE**

**Texas Children's Hospital North Austin: How we delivered a new campus on time and under budget during COVID, supply chain interruptions, and the highest inflation in decades**

Speaker: Emily Barris, Senior Project Architect, Page; Allie Jones, Assistant Director, Facilities Planning & Development, Page

1:30 PM – 1:45 PM

Please see mobile app for this session

2:00 PM – 2:15 PM **HORD CAPLAN MACHT**

**Creating a String of Pearls: Moving Beyond System-wide Design Standards**

Speaker: Jerielle J. Ward, Interior Designer, Hord Caplan Macht

2:30 PM – 2:45 PM **BSA LIFESTRUCTURES**

**Overflowing Shopping Cart: Maximizing Space Efficiency in Repurposed Buildings**

Speaker: Sarah Luna, AIA, NCARB, EDAC, Healthcare Planner, BSA LifeStructures

2:50 PM – 3:05 PM

**Passport winner**

Passport Program Networking Game \$1,000 winner announced at Design Solutions Theater #2



## TUESDAY, SEPTEMBER 24

7:00 AM - 5:30 PM

### Registration

HFSE Registration in the Austin Convention Center is located on the first level near the entrance at the corner of Red River Street and E Caser Chavez Street.

7:00 AM - 8:30 AM

### Networking Breakfast

Open to Conference Attendees Only

BALLROOM ABC

Start with your day with breakfast and chatting with your fellow attendees.

Sponsored by: 

8:30 AM - 9:45 AM

### Welcoming Ceremony and Opening Keynote

#### Impact of Mass Incarceration on Population Health

Open to All Attendees!

BALLROOM ABC



**SPEAKER:**  
Esmail Porsa, MD, MBA, MPH, CCHP-A  
President and Chief Executive Officer, Harris Health System

Join us for the 2024 Welcoming Ceremonies and stay for the Opening Keynote with Dr. Esmail

Porsa who serves as the President and Chief Executive Officer for Harris Health System, which is a community-focused, academic and safety-net healthcare system dedicated to improving the health of those most in need in Harris County, Texas, through quality care delivery, coordination of care, and education.

Sponsored by: 

10:00 AM - 11:00 AM

### 9-1-1, What's Your Emergency? Innovation to the Rescue, Cedars-Sinai ED

Open to Conference Attendees Only

ROOM 5

#### SPEAKERS:

- Sean Collins, AIA, LEED AP, Executive Director of Facilities, Planning, Design & Construction, Cedars Sinai Medical Center
- Marty Fifer, AIA, NCARB, DBIA, EDAC, Associate Principal - Healthcare, HGA
- Jon Huddy, President and Senior Healthcare Consultant, Huddy HealthCare Solutions
- Jiho Yoo, Architect, Cedars-Sinai Health System

Sponsored by: 

### Architectural Avenger: Championing Health Equity in a Safety-Net Hospital

Open to Conference Attendees Only

ROOM 8

#### SPEAKERS:

- Patrick Casey, AIA, SVP, Facilities Construction & Systems Engineering, Harris Health System
- Colby Dearman, AIA, ACHA, LEED BD+C, LSSYB, Principal & Senior Medical Planner, HKS Architects, Inc.
- Amie McBride, AIA, LSSYB, Sr. Medical Planner, HKS, Inc.
- Thomas Packer
- Licensed Professional Engineer, Associate Principal, Arup

Sponsored by: 

### Hear No Evil, See No Evil: Exploring How Light & Sound Impacts the Patient Experience

Open to Conference Attendees Only

ROOM 6

#### SPEAKERS:

- Zachary Benedict, AIA, LEED AP, President, MKM architecture + design
- Nancy Coleman-Davis, RID, National Director of Design Integration, Medxcel
- Matthew Sparling, AIA, LEED AP, Principal, MKM architecture + design

Sponsored by:   
Providing the Absolute Best Construction Experience

### Operational Planning 101 - How creating a plan is key to the success of an organization

Open to Conference Attendees Only

ROOM 9AB

#### SPEAKERS:

- Noelia Bitar, AIA, ACHA, EDAC, LEED GA, WELL AP, Health Principal
- Kristina Krail, MPH, RN, FACHE, NEA-BC, PMP, EDAC, Krail AdvisoryFirstname Lastname, Title, Company Name
- Luke Leyden, AIA, NCARB, ACHA, Assistant Director / Chief Architect, University of Iowa Hospital and Clinics
- Dania Baba, PhD, PMP, CPHRC, LBBP, Health Operations SME, Jacobs

Sponsored by: 

### The Future of Orthopedic Centers: Delivering Comprehensive Care

Open to Conference Attendees Only

ROOM 9C

#### SPEAKERS:

- Luis Carrazana, LEED AP, Associate University Architect, University of Virginia
- Bobby Chhabra, MD, Chair, Department of Orthopaedic Surgery, University of Virginia
- Maryam Katouzian, AIA, Principal, ZGF Architects

Sponsored by: 



## We Are the World: Harmonizing Goals for Optimal Project Outcomes

Open to Conference Attendees Only

ROOM 4\*

### SPEAKERS:

- Patrick Duke, Americas Healthcare Solutions Lead, Turner & Townsend Healthcare

11:00 AM - 11:15 AM

## Recharge Break

Open to Conference Attendees Only

Sponsored by:



11:15 AM - 12:15 PM

## Designing for a First-in-the-World Proton Therapy Cancer Treatment System

Open to Conference Attendees Only

ROOM 5

### SPEAKERS:

- Daniel Medrano, Corporate Vice President Facilities Management & Director of Innovation, McLaren Health Care Corporation
- Vahagn Nazaryan, Ph.D., Executive Director, Radiation Oncology and Proton Therapy, McLaren Health Care Corporation
- Stephen Towe, CEO, Leo Cancer Care
- Goran Vukovljak, AIA, LEED Green Associate, CLGB, Project Executive, Gresham Smith
- Dan White, FAIA, LEED AP, CLGB, Senior Vice President, Gresham Smith

Sponsored by:

LINBECK

## Don't Get Sidelined by the Guidelines: How to Strategically Interpret, Clarify, and Apply Health Care Design Requirements

Open to Conference Attendees Only

ROOM 9AB

### SPEAKERS:

- Jackie Hrudka, CPA, Director of Ambulatory Operations, Cleveland Clinic
- Jeff Zika, BSN, RN, HACP, Accreditation Manager, Cleveland Clinic

Sponsored by:



## Four Decades of Intensive Care Unit Design Evolution with Thoughts for the Future

Open to Conference Attendees Only

ROOM 9C

### SPEAKERS:

- Neil Halpern, MD, MCCM, FCCP, FACP, Chief Critical Care, Memorial Sloan Kettering Cancer Center

Sponsored by:



## Healthcare Decision-Making Beyond Matterport

Open to Conference Attendees Only

ROOM 6

### SPEAKERS:

- Jason Luthy, LEED AP, Director of Space Planning, Cincinnati Children's Hospital Medical Center
- Laura Runck, MS, Director - Operations, Cincinnati Children's Hospital Medical Center
- Michael Zumpano, LEED AP, BD+C, Senior Architect, BHDP Architecture

Sponsored by:



## How Can the Mental Healthcare Design Process Lead to Better Treatment Programs, Built Environments, and Service User Outcomes?

Open to Conference Attendees Only

ROOM 4\*

Moderator: Sara Wengert, AIA, ASID, AIA ASID, Principal, architecture+

### SPEAKERS:

- Sonja Burns, Mental Health Advocate
- Parker LaCombe, Co-Founder of MindCareConnect and Peer Support Workforce Development Specialist, City and County of Denver, Colorado
- Katharine Lazenby, Organizational Development Consultant, East London NHS Foundation Trust
- Philip Ross, CEO / Co-founder, Safehinge Primera Inc, Chair - Design in Mental Health Network

## Strategies for Improving Healthcare Staff Recruitment and Retention with Environmental Enhancements

Open to Conference Attendees Only

ROOM 8

### SPEAKERS:

- Jeremy Bartz, AIA, NCARB, President, E4H
- Scott Carlos, AVP, Construction, Facilities, and Environmental Services, Endeavor Health - Edward Hospital
- Jennifer Lacy, Building Forward® Lean Practice Leader, Robins & Morton
- Julian Lopez, NCIDQ, IIDA, Senior Project Designer, HMC Architects
- Victoria Navarro, MBA-HCM, Vice President, Design and Construction, AdventHealth
- Daina Pitzenberger, RN, Senior Vice President, Business Development of Project and Development Services, JLL

Sponsored by:



\* Seating in room 4 will be limited for this session and is first come first served.





## 12:15 PM - 1:30 PM

### Awards Luncheon

Open to Conference Attendees Only

BALLROOM ABC

Join us for lunch as the Symposium Distinction Awards and the Founder's Award are presented.

Sponsored by:



## 1:45 PM - 2:45 PM

### ASHRAE Decarbonization Design Guide

Open to Conference Attendees Only

ROOM 5

#### SPEAKERS:

- Walt Vernon, PE, EDAC, LEED AP, MBA, JD, LLM, CEO, Mazzetti, Inc.

Sponsored by

LINBECK

### Collaboration for Ensuring Safety in an Active Hospital during Construction

Open to Conference Attendees Only

ROOM 6

#### SPEAKERS:

- Jen Correa, MBA, PMP, Senior Project Manager, Stanford Medicine Children's Health
- Erik Ornelas, MPH, CIC, Infection Control Specialist, Stanford Medicine Children's Health
- Bowen Raymond, EHS Program Manager, Stanford Medicine Children's Health
- Mike Nelson, Director of Construction, Stanford Medicine - Planning, Design + Construction

Sponsored by:



Providing the Absolute Best Construction Experience

### Getting to the HEART of the Matter: Discerning The Absolutely Essential from The Merely Important

Open to Conference Attendees Only

ROOM 4\*

#### SPEAKERS:

- Francis Murdock Pitts, FAIA, FACHA, OAA, Principal, architecture+

### Measuring and Managing: Understanding Square Feet and Area Calculation

Open to Conference Attendees Only

ROOM 9AB

#### SPEAKERS:

- Jennifer Aliber, FAIA, FACHA, Principal, Vice President, Shepley Bulfinch
- D. Kirk Hamilton, PhD, FCCM, Emeritus FAIA & FACHA, EDAC, Professor Emeritus, Texas A&M University

Sponsored by



### Take 3: Design Innovations in Post Acute Care

Open to Conference Attendees Only

ROOM 8

#### SPEAKERS:

- Barbara Miszkiet, OAA, FRAIC, NSAA, AAPEI, LEED AP, EDAC, Director, Health and Vice President, HDR Architecture Associates Inc
- Wayne Walker, Executive Director, Mental Health and Addictions Capital Planning, Government of Prince Edward Island, Department of Health and Wellness
- Mahina Wright, M.Arch., B.Sc., EDAC, RHFAC, Intern Architect AIBC, Healthcare Planner, Intern Architect, HDR Architecture Associates Inc

Sponsored by



### The Value of a Quality Art Program & How To Achieve It

Open to Conference Attendees Only

ROOM 9C

#### SPEAKERS:

- Alisa Carlson, Project Manager, Methodist Health System
- Jodi Fernandez, EDAC, Regional BD Manager, Smith Seckman Reid
- Kat Middlebrook, NCIDQ, LEED ID+C, Interior Designer, Perkins&Will

Sponsored by



## 2:45 PM - 4:00 PM

### Assessing and Impacting the Healthcare Experience Across the Full Continuum of Care

Open to Conference Attendees Only

BALLROOM ABC

#### MODERATORS:

- Lisa Feeley, CSSMBB, Business Development, IMEG
- Lynn Murphy, Associate Vice President, UK HealthCare Facilities Planning
- Eric Vandenbroucke, PE, LEED AP, Managing Principal, Vice President of Healthcare, IMEG
- Bob Moore, CHC, Senior Vice President & National Healthcare Leader, Whiting Turner

#### SPEAKERS:

- Skanda Skandaverl, Division Director, Facilities Management, Energy and Infrastructure, CommonSpirit Health
- Arnulfo Castillo, AIA, LEED AP, Senior Director, Planning & Design Studio, Orlando Health
- Todd M. Cohen, FACHE, EDAC, Associate VP, Facilities & Real Estate, Adventist HealthCare
- Karen Freeman, Principal, HOK
- Corey Gaarde, FHIMSS, CPHIMS, Associate Principal | Project Executive, IMEG
- Joel George, MBA, MSN, PhD(c), Executive Director of Retail Services, AdventHealth
- Todd Graham, Sr. Managing Director, Veyron
- Kevin Haggerty, Senior Director, East Region PDS Healthcare Lead Project & Development Services, Cushman & Wakefield

## CONFERENCE SESSIONS: TUESDAY



HEALTHCARE  
FACILITIES  
symposium and expo

- Brian Martin, AIA, LEED AP, EDAC, Regional Healthcare Director, Principal, Page
- Randi Ruble, Senior Vice President, Real Estate Development, Catalyst

Sponsored by



2:45 PM - 3:00 PM

### Recharge Break

Open to Conference Attendees Only

Sponsored by:



Rogers-O'Brien  
CONSTRUCTION

3:00 PM - 4:00 PM

### American College of Healthcare Architects Certification Prep Seminar

Open to Conference Attendees Only

ROOM 5

#### SPEAKERS:

- Craig Puccetti, AIA, ACHA, EDAC, Principal, BSA Lifestructures

Sponsored by:

LINBECK



### Disaster Recovery and Future Planning for the Governor Juan F. Luis Hospital After Hurricane Maria in the US Virgin Islands

Open to Conference Attendees Only

ROOM 8

#### SPEAKERS:

- Neal Boothe, PE, Principal/Senior Electrical Engineer, TLC Engineering Solutions
- Steve Jackson, LEED BD+C, Principal, Flad Architects
- Darryl Smalls, PE, Executive Director, Territorial Hospital Redevelopment Team, Government Hospitals and Health Facilities Corporation (USVI)

Sponsored by



### Let's Build A Better World Together: A Workshop to Explore How to Create a New and Better Future for Healthcare and Design

Open to Conference Attendees Only

ROOM 4\*

#### SPEAKERS:

- Dr. Wayne Ruga, Founder and President, The CARITAS Project

\* Seating in room 4 will be limited for this session and is first come first served.

### Participatory Design Yields Inclusivity at Gillette Children's

Open to Conference Attendees Only

ROOM 6

#### SPEAKERS:

- Erin Labrec, Medical Planner, HGA
- Brent Peterson, Sr Industrial Engineer, Lean Operations Planner, HGA
- Beth Risberg, Vice President, Infrastructure, Gillette Children's
- Dominique Thomas, Equity Operations Lead, HGA

Sponsored by:



Providing the Absolute Best  
Construction Experience

### The Not So Standard Standard - Building a Framework for Room Prototypes and Clinical Operations

Open to Conference Attendees Only

ROOM 9AB

#### SPEAKERS:

- Christopher Haedt, AIA, NCARB, ACHA, LEED BD+C, Principal, Columbus Healthcare Practice Group Leader, DesignGroup
- Michelle Kannapel, MBA, VP - Service & Growth, Norton Medical Group, Norton Healthcare
- Sean McShane, CHOP (A), CHC (KY), Senior Project Manager, Design and Construction, Norton Healthcare

Sponsored by

design  
that moves  
people



4:00 PM - 6:00 PM

### Grand Opening of Exhibit Floor & Symposium Party

Open to All Attendees!

EXHIBIT HALL

Let's celebrate 37 years of the Symposium during our grand opening of the exhibit floor and the Symposium Party. Drinks and appetizers will be offered in a fun, lively setting.

Sponsored by:



For the most up-to-date session descriptions, and complete speaker information, download the Healthcare Facilities Symposium & Expo Mobile App. See page 6 for details.



## WEDNESDAY, SEPTEMBER 25

**7:00 AM - 3:00 PM**

### Registration

HFSE Registration in the Austin Convention Center is located on the first level near the entrance at the corner of Red River Street and E Caser Chavez Street.

**7:00 AM - 8:30 AM**

### Networking Breakfast

*Open to Conference Attendees Only*

**BALLROOM ABC**

Start with your day with breakfast and chatting with your fellow attendees.

**8:00 AM - 9:00 AM**

### A Holistic Approach to Emergency and Behavioral Health Care Using the Empath Model

*Open to Conference Attendees Only*

**ROOM 8**

#### SPEAKERS:

- Robert Dupont, System Administrative Officer, MUSC Health
- Tim Smoak, Associate Vice President, Patient Services, Mcleod Health
- Lindsey Stang, AIA, GGP, Principal | Practice Leader, Planning, Array Architects
- Stephanie Story, CHID, NCIDQ, Principal | Interior Design Director, Array Architects

Sponsored by  **KELLEY**  
CONSTRUCTION INC.

### Building Healthier Communities: A Deep Dive Into Designing Population Health Centers for Inclusive Wellness

*Open to Conference Attendees Only*

**ROOM 6**

#### SPEAKERS:

- Yogi Matharu, DPT, OCS, MBA, Associate Chair of Clinical Services and Director of Physical Therapy, Keck Medicine of USC
- Jayson Molina, MSN, MSHP, RN, CCM, Vice President of Operations, Culinary Health Fund
- Christina Olivarria, MSPM, PMP, HACF, LBBP, Director of Business Development and Communication, YellowBrick
- John Socha, BS, Vice President, Health Center Strategy & Development, Culinary Health Fund

Sponsored by:



*Providing the Absolute Best  
Construction Experience*

### Creative Collaborations - How Do We Create a New Working Model?

*Open to Conference Attendees Only*

**ROOM 4\***

#### SPEAKERS:

- Bruce Komiske, MHA, FACHE, Owner, Komiske Consulting
- Annette Ridenour, Creative Instigator, Art Consultant, Designer, Art, President, Aesthetics, Inc.
- Naj Wikoff, National Organization of Arts in Health, Co-Founder, VP Emeritus, NOAH Inc.

### Demystifying the Co-location and Dual Licensure of Ambulatory Surgery Centers and Surgery HOPD's

*Open to Conference Attendees Only*

**ROOM 9C**

#### SPEAKERS:

- Kari Allen, AIA, ACHA, LSS-GB, EDAC, LEED AP, CLSS-HC NFP, Architect, Healthcare Practice Leader, Guidon
- Jeff Caesar, VP, Capital Project Management, Community Health Network (CHNw)
- Natalie Christy, RN, BSN, MHL, VP of Surgical, Community Health Network (CHNw)
- Chase Miller, RA, NCARB, ACHA, EDAC, Senior Healthcare Planner, Architect, Guidon

Sponsored by



### Texas Healthcare: Epicenter of Growth and Development

*Open to Conference Attendees Only*

**ROOM 9AB**

#### SPEAKERS:

- Dr. Nicole Clark, Anchor and Reporter, Spectrum News
- Stephen Simpson, Mental Health Reporter, Texas Tribune

### Through the Lens: Integrating Biophilic Elements Into a Nebraska Medicine Specialty Clinic

*Open to Conference Attendees Only*

**ROOM 5**

#### SPEAKERS:

- Jennifer Ankerson, IIDA, Associate, Senior Interior Designer, LEO A DALY
- Andrew Balus, Executive Director of Utilities & Engineering, Nebraska Medicine
- Kurt Johnson, AIAP Certified Architectural Photographer, Nature Photographer, Kurt Johnson Photography
- Alison Topp, AIA, NCARB, LEED AP, Architect, Project Manager, LEO A DALY
- Carolyn Johnson, Sales, Marketing, and Operations Principal, Kurt Johnson Photography

Sponsored by

**LINBECK**

**9:15 AM - 10:30 AM**

### Keynote: AI & The Future of Healthcare Systems & Spaces

*Open to All Attendees!*

**BALLROOM ABC**



#### SPEAKER:

**Dan Chuparkoff, Innovation & A.I. Expert**

Preparing for an AI-future might be the most important challenge of today. But people are already overwhelmed by a firehose of change.

Now teams are skeptical and anxious about the disruption that A.I. might bring. Today, it's critical for teams to understand how AI will impact our systems, our services, our spaces, and the way we work.

Sponsored by:





# CONFERENCE SESSIONS: WEDNESDAY



**HEALTHCARE  
FACILITIES**  
symposium and expo

**11:30 AM – 1:00 PM**

## Networking Lunch On Exhibit Floor

*Open to All Attendees!*

Enjoy your lunch with fellow attendees on the exhibit floor. Be sure to check out the tables hosted by



**1:00 PM – 2:00 PM**

## Community Wellness - Coming Soon to a Neighborhood Near You!

*Open to Conference Attendees Only*

**ROOM 6**

### SPEAKERS:

- Geof Edwards, AIA, LEED AP, CEO, Alta Architects
- Carol Huber, DrPH, MBA, Deputy Chief Public Health and Equity Officer, University Health
- Craig Puccetti, AIA, ACHA, EDAC, Principal, BSA LifeStructures
- Wendy St. John, RN, BSN, TCRN, Healthcare Operational Planner, BSA LifeStructures

Sponsored by:



## Culturally Inclusive Care: Healthcare Design for Black Communities

*Open to Conference Attendees Only*

**ROOM 4\***

### SPEAKERS:

- Lisa Cholmondeley, Principal, Gensler
- Bonny Slater, CHID, ASID, LEED AP, Co-Global Healthcare Practice Leader and Design Director, Gensler

## Delivering Healthcare to UNC Health Blue Ridge: Master Planning Two Campuses

*Open to Conference Attendees Only*

**ROOM 9AB**

### SPEAKERS:

- Deanne Avery, CHC, EDAC, Director Capital Projects, Planning, Design & Construction, UNC Health Blue Ridge
- Heather Beard, AIA, ACHA, Project Manager | Senior Associate, DLR Group
- Sara Cheikelard, AIA, EDAC, Project Manager | Senior Associate, DLR Group

Sponsored by



## Environmental Justice: Henry Ford Health's Pledge to the US Justice 40 Initiative

*Open to Conference Attendees Only*

**ROOM 5**

### SPEAKERS:

- Kristen Banas, P.E., Associate Principal, BR+A Consulting Engineers
- Jen Cross, PLA, ASLA, Principal Landscape Architect, HDR Inc.
- Jerry Darby, MBA, VP, Campus Planning, Development & Design, Henry Ford Health
- Rick Kobus, FAIA, FACHA, Founding Partner and Senior Principal, Tsoi Kobus Design

Sponsored by

**LINBECK**

## Revolutionizing Patient Care: A Smart Room Design Innovation Playbook

*Open to Conference Attendees Only*

**ROOM 9C**

### SPEAKERS:

- Joan Albert, NCARB, LEED AP, Principal, Regional Healthcare Director, Page
- Eliane De Lima, RA, NCARB, Principal, Page
- Zac Hillyard, RSM, SmartScore AP, Principal, Smith Seckman Reid, Inc.
- Sherrill Lanthier, RN, BSN, Smart Hospital Clinical Champion, Clinical Operations Manager, Houston Methodist

Sponsored by



## Transforming Pediatric Mental Health: An Innovative Design and Care Model

*Open to Conference Attendees Only*

**ROOM 8**

### SPEAKERS:

- Lyndsey Deaton, PhD, RA, AICP, PMP, LEED GA, Assistant Professor, Clemson University
- Shan Jiang, Ph.D. in Architecture and Health (Clemson University, Director of Research, GBBN
- Michael Lied, LEED AP, Principal, Director of Healthcare, GBBN Architects
- Joseph Luria, MD., VP Mental Health Operations, Cincinnati Children's Hospital Medical Center

Sponsored by



**2:00 PM – 3:00 PM**

## Ice Cream Social on Exhibit Floor

*Open to All Attendees!*

Visit the exhibit floor one last time for an ice cream treat and to thank the exhibitors for their support of the Symposium.

Sponsored by



\* Seating in room 4 will be limited for this session and is first come first served.

[www.hcarefacilities.com](http://www.hcarefacilities.com)



## 3:00 PM - 4:00 PM

### Cadre Research: Developing a Blueprint for Mitigating Nurse Burnout

Open to Conference Attendees Only

ROOM 4\*

#### SPEAKERS:

- Deborah Wingler, Ph.D., MSD-HHE, EDAC, LSSYB, Global Practice Director, Applied Research, HKS

### Evolving Crisis Care: Deploying a Behavioral Health Crisis Stabilization Centers Nationwide

Open to Conference Attendees Only

ROOM 8

#### SPEAKERS:

- Stephen Parker, M.Arch, RA, AIA, NOMA, NCARB, LEED AP, Architect+Behavioral Health Planner, Stantec
- Jon Sell, Principal, Senior Behavioral Health Planner, Stantec
- Linda Studer-Ellis, Director of Program Implementation, Connections Health Solutions

Sponsored by 

### Health Care Microgrids Can Lower Utility Costs, Meet Sustainability Goals and Increase the Resilience of Your Facility

Open to Conference Attendees Only

ROOM 5

#### SPEAKERS:

- Duc Bui, Professional Engineer, Principal, Salas O'Brien
- Ramé Hemstreet, Nation Facilities Design and Construction Vice President of Operations & Chief Energy Officer, Kaiser Permanente
- Jamie Schnick, PE, Senior Electrical Engineer, Building Standards Unit, FDD - HCAI (previously OSHPD)
- William "Rocky" Tanner, Professional Engineer, Principal, RTM

Sponsored by 

### Improving Access to Care in Medical Deserts

Open to Conference Attendees Only

ROOM 6

#### SPEAKERS:

- Justin Kanturek, NCARB, AIA, Architect, Oculus Inc.
- Ali Summerford, NCIDQ, RID, LEED ID&C, EDAC, Interior Design Director, Oculus Inc.
- Sam Werschky, PE, Assistant Vice President Planning, Design, & Construction, Cook Children's Health Care System

Sponsored by:



### Setting The Bar: Developing a Prototype for Next-Generation Design Standards

Open to Conference Attendees Only

ROOM 9AB

#### SPEAKERS:

- Sean Murphy, AIA, ACHA, LEED AP, Partner & Healthcare Studio Principal, Little Diversified Architectural Consulting, Inc.
- Brennan Wilgus, AIA, NCARB, LEED AP BD+C, CDT, Project Architect, Little Diversified Architectural Consulting, Inc.
- Angela Wooten, AIA, LEED AP, NCARB, Director Facilities, Ambulatory, WakeMed Health & Hospitals

Sponsored by



### Use It Or Lose It: Mobility to Reduce Falls

Open to Conference Attendees Only

ROOM 9C

#### SPEAKERS:

- Brian Blazejak, AIA, NCARB, Associate Principal, Hord Coplan Macht
- Michael Friedman, PT, MBA, Sr. Director Strategic Programs, Johns Hopkins Medicine, Director Johns Hopkins Activity and Mobility Promotion (JH-AMP)
- Rhonda Wyskiel, RN, MSN, Principal, Hord Coplan Macht

Sponsored by



## 4:00 PM - 4:15 PM

### Recharge Break

Open to Conference Attendees Only

Sponsored by:



## 4:15 PM - 5:15 PM

### Like Family: A Look at Senior Healthcare in Close Knit Community

Open to Conference Attendees Only

ROOM 9C

#### SPEAKERS:

- Stephanie Fallon, M.S., IIDA, CHID, LEED Green Associate, Director of Interiors, Associate Partner, PhiloWilke Partnership
- Zach Mitchell, AIA, Associate Partner, PhiloWilke Partnership
- Courtney Rhyne, Project Manager, Gonzaba Medical Group
- Claudia Ubina Frías, Director of Acute Care, Gonzaba Medical Group

Sponsored by



\* Seating in room 4 will be limited for this session and is first come first served.



## Metrocare, Transforming Mental Health Outcomes & Communities through the Behavioral Health Innovation Center

Open to Conference Attendees Only

ROOM 8

### SPEAKERS:

- Kevin Boyd, Chief Planning, Design, and Construction Officer, Metrocare
- Tameka Cass, Chief Philanthropy & Diversity Officer, Metrocare
- Angela Crum, RID, IIDA, EDAC, LEED AP, Associate Vice President, Kirksey Architecture
- Christel Hought, AIA, LEED AP BD+C, Associate, Kirksey Architecture

Sponsored by 

## Practical Design Research: How Visibility Can Enhance Communication and Safety in Healthcare Facilities

Open to Conference Attendees Only

ROOM 4\*

### SPEAKERS:

- Arsalan Gharaveis, PhD, AIA, NCARB, EDAC, Senior Medical Planner, Taylor Design
- Teresa Endres, AIA, ACHA, EDAC, AAH, Medical Planning Director, Taylor Design
- D. Kirk Hamilton, PhD, FCCM, Emeritus FAIA & FACHA, EDAC, Professor Emeritus, Texas A&M University

## Site, Culture, And State-of-the-Art Planning: The Making of a Landmark Regional Replacement Hospital

Open to Conference Attendees Only

ROOM 9AB

### SPEAKERS:

- Daniel Cebelinski, MBA, PE, CHFM, Director of Facilities, Essentia Health
- Oscar Gomes, PE, Principal, Director of Diversity, Equity and Inclusion, EwingCole
- Saul Jabbawy, Principal, Regional Director of Design, EwingCole
- Leslie Kipps, AIA, LEED AP, EDAC, CLSSBB, Principal, EwingCole
- Debbie Phillips, AIA, ACHA, EDAC, Principal, EwingCole

Sponsored by 

## Transforming All India Institute Of Medical Sciences (AIIMS): Creating a Sustainable Model for Healthy Urban Living

Open to Conference Attendees Only

ROOM 5

### SPEAKERS:

- Daniel DiMarco AIA, LEED AP BD+C, EDAC, Principal, Health + Science Studio Lead, Buildings + Places, AECOM
- Randeep Guleria, MD, DM, FAMS, DSc (Honoris Causa), Chairman of the Institute of Internal Medicine & Respiratory and Sleep Medicine / Director Medical Education, Medanta Global Health, Ltd.
- Greg Mare, FAIA, ACHA, EDAC, VP, Healthcare Market Leader, US West B+P and Hawaii, AECOM
- Mark McVay, AIA, NCARB, DBIA, Design Principal, AECOM

Sponsored by 

## Transforming Service Delivery Using Robotics- Demonstrating the Role of AI In Enhancing Safety & Security

Open to Conference Attendees Only

ROOM 6

### SPEAKERS:

- Clifford Harvey, MSc(HQ), EDAC, OAA, FRAIC, Joint VP Redevelopment, Grand River Hospital / St. Mary's General Hospital
- Sandesh Jagdev, Founding Principal, Logimaxx
- Doug King, AIA, ACHA, NCARB, VP, National Healthcare Sector Leader, Project Mangement Advisers Inc.

Sponsored by:   
Providing the Absolute Best Construction Experience

**6:00 PM - 7:30 PM**

## Happy Hour

Open to All Attendees!

Location: **Speakeasy, 412 Congress Ave D, Austin, Texas**

Join your fellow attendees, speakers and exhibitors for a Happy Hour before heading out to enjoy Austin! Drinks will be provided and light appetizers.

Sponsored by 



For the most up-to-date session descriptions, and complete speaker information, download the Healthcare Facilities Symposium & Expo Mobile App. See page 6 for details.





## THURSDAY, SEPTEMBER 26

**7:30 AM - 12:30 PM**

### Information Desk Open

The Information Desk will be located in the Austin Convention Center.

**7:30 AM - 8:30 AM**

### Networking Breakfast

*Open to Conference Attendees Only*

**BALLROOM ABC**

Start your day with breakfast and say hello to your friends and colleagues.

**8:30 AM - 9:30 AM**

### Beyond Design & Construction - Lessons From Women's and Children's Hospital

*Open to Conference Attendees Only*

**ROOM 8**

#### SPEAKERS:

- Brian Freeman, Executive Director of Capital Project, University Health
- Andy Mina, PE, FHFI, Associate Vice President, Healthcare Programs, Broaddus & Associates
- Irene Sandate, DNP, MSN, APRN, NNP-BC, C-ONQS, Vice President/Chief Nursing Officer, Women's & Children's Hospital at University Health

Sponsored by



### Designing on the Edge; How a Team Aligned to Deliver On Target in Turbulent Economic Times

*Open to Conference Attendees Only*

**ROOM 9AB**

#### SPEAKERS:

- Candice Barter, AIA, NCARB, EDAC, Principal and Office Director, E4H Environments for Health Architecture
- Rebecca Jablonowski, President, Brio Project Management
- Sharon Jozokos, LEED AP, Vice President of Healthcare, Columbia
- Angela Tambini, Executive Director of Cancer and Infusion Services, Lahey Hospital & Medical Center

Sponsored by



### From Obstacle to Opportunity: SAC Health's Adaptive Reuse Story

*Open to Conference Attendees Only*

**ROOM 6**

#### SPEAKERS:

- Scott Butcher, Senior Project Manager, BNBuilders
- Jeffrey Dreesman, AIA, LEED AP BD+C, Director of Medical Planning, Perkins&Will
- Anthony Mistretta, RN, MS, HC Ops+Strat Plan Exec Principal, Perkins&Will
- Peggy Pailian, AIA, LEED AP BD+C, Senior Project Architect, Perkins&Will
- Noah Toomey, AIA, DBIA Associate, Senior Design Manager, BNBuilders
- Maryellen Westerberg, DrPH, MPH, RDN, CDCES, Chief Operating Officer, SAC Health

Sponsored by:



*Providing the Absolute Best Construction Experience*

### Transforming Oncology Care: Emory's IFD Journey and Impact

*Open to Conference Attendees Only*

**ROOM 5**

#### SPEAKERS:

- Erin Carlson, AIA, EDAC, CSSBB, Senior Manager, BDR Partners
- Katy Lucchesi, Senior Managing Consultant | Chief of Staff, Simpler Consulting, an IBM Company
- Caleb Raine, Physician Assistant, Winship Cancer Institute of Emory University
- Graham Sinclair, AIA, ACHA, EDAC, Associate Principal, The Beck Group

Sponsored by

**LINBECK**

### Under Pressure: Upgrading HVAC Systems When The Heat is On

*Open to Conference Attendees Only*

**ROOM 9C**

#### SPEAKERS:

- Nick Burkett, PE, Vice President and Mechanical Principal, HPMB Consulting Engineers, Inc.
- Eric Groat, Division Manager, Robins & Morton
- Hee Lee, Regional Director, Facilities Management, Central Region, Real Estate, Tenet Healthcare
- Mark Lerma, MEP Superintendent, Robins & Morton
- Tom Thibeaux, Preconstruction Division Manager, Robins & Morton

Sponsored by



**11:00 AM - 11:15 AM**

### Recharge Break

*Open to Conference Attendees Only*

Sponsored by:



**Rogers-O'Brien  
CONSTRUCTION**



For the most up-to-date session descriptions, and complete speaker information, download the Healthcare Facilities Symposium & Expo Mobile App. See page 6 for details.



**9:45 AM - 10:45 AM**

## Beyond Boundaries: Redefining Excellence in Emergency Services through Freestanding Emergency Departments

*Open to Conference Attendees Only*

**ROOM 5**

### SPEAKERS:

- Priscilla Cuadra, RA, RID, AIA, LSSYB, Associate Architect and Medical Planner, HKS Architects
- Colby Dearman, AIA, ACHA, LEED BD+C, LSSYB, Principal & Senior Medical Planner, HKS Architects, Inc.
- Julie Walters Somarriba, BArch, MBA Candidate, Project Executive, Duke University Health System

Sponsored by

**LINBECK**

## From Bedside to Building: Nursing's Powerful Influence on Design through Transition

*Open to Conference Attendees Only*

**ROOM 9AB**

### SPEAKERS:

- Roxanne Butler, MOSD, RNC, Principal, Blue Cottage of CannonDesign
- Maria Happe, MSN, RN, CCRN-K, Associate Vice President, Clinical Specialist, Blue Cottage of CannonDesign
- Tara Jernigan, DNP, NEA-BC, Executive Director, Northeast Georgia Medical System

Sponsored by

design  
that moves  
people

**swath**

## Patient Access Impact - Virginia Design Innovations

*Open to Conference Attendees Only*

**ROOM 6**

### SPEAKERS:

- Stacey Johnson, LCSW, MBA, Hospital President/VP of Riverside Mental Health & Recovery Center, Riverside Health System
- Jessica Macalino, MSHA, FACHE, President, Riverside Smithfield Hospital
- Sandy Tkacz, East Region Health Director, VP, HDR
- Matt Wilks, PT, MSPT, Vice President, Chief Rehabilitation Officer, Sheltering Arms Institute

Sponsored by:

**SpawGlass**

Providing the Absolute Best  
Construction Experience

## Preparing Your Hospital for a Crisis

*Open to Conference Attendees Only*

**ROOM 8**

### SPEAKERS:

- Arnulfo Castillo, AIA, LEED AP, Senior Director, Planning & Design Studio, Orlando Health
- Cristina Stover, PE, CGC, CHFM, Vice President, Hammes Healthcare, Hammes
- Eric Vandenbroucke, PE, LEED AP, Managing Principal, Vice President of Healthcare, IMEG

Sponsored by

**KELLEY  
CONSTRUCTION INC.**

## Repurposing Assets and Design-Build Delivery, Key to Meeting Market Demand

*Open to Conference Attendees Only*

**ROOM 9C**

### SPEAKERS:

- Hunvey Chen, AIA, LEED AP BD+C, DBIA, Regional Leader of Health Care, HOK
- John D'Amico, Principal Project Manager, UCLA Capital Programs
- Suzanne Kiely, Project Manager, UCLA Health Real Estate: Planning, Design & Construction
- Grady Ritua, LEED® AP BD+C, Project Director, McCarthy Building Companies, Inc.

Sponsored by

**CAMPOS  
ENGINEERING**

**10:45 AM - 11:00 AM**

## Recharge Break

*Open to Conference Attendees Only*

Sponsored by:

**RO**

**Rogers-O'Brien  
CONSTRUCTION**

**11:00 AM - 12:15 PM**

## Closing Keynote - Learning And Designing: The Source Of Agency To Change The World

*Open to All Attendees!*

**BALLROOM ABC**

### SPEAKER:

**Tama Duffy Day, FACHE, FIIDA, FASID, LEED AP, FwA, Principal, Gensler**



Design has the power to change the world and to positively affect healing and promote well-being. Be an armchair traveler with industry pioneer, Tama Duffy Day, as she shares her history with the Symposium, tells stories of the power of design, and describes the inspirational legacy of her 40+ years of being a global leader in health and wellness.

Sponsored by:

**Lantana  
Communications**  
an AT&T TELECOM Company



For the most up-to-date session descriptions, and complete speaker information, download the Healthcare Facilities Symposium & Expo Mobile App. See page 6 for details.

# EXHIBIT HALL MAP



HEALTHCARE  
FACILITIES  
symposium and expo

## Design Team Gallery Area

1	2	3	4	5	6	7	8	9	10	11	12
		13	14	15	16	17	18	19	20		
529		Design Solutions Theater 2		435	335	338	237				
527				434	333	336	235				128
525		532	431	432	331	664	231				
523		530	429	430	329	332			232	130	
519						330	229		230	129	
		526	425	426	325	325	225		226	125	124
		520	419	420	319	320	219		220	119	122
											120
											118
		516	413	414	315	316	215		214	115	116
		514			313	314	213			113	114
509											112
		510	409	410		310	209		210	107	110
507		508	407	408	305	308	207		208		108
505		506	405	406							106
503		504	403	402	301	304	203				
501		502	401			302	201		202	101	102

← Lunch

ENTRANCE

● = Feature Area

● = Raffle Central & Passport Program Winner Announced





A special thank you to our exhibitors, design gallery firms, and sponsors. We greatly appreciate your support and could not produce such an amazing event without you.

Exhibitor Name	Location		
8180 Art Consulting, LLC.....	Booth 310	HKS .....	DG 6
Accurate Lock & Hardware.....	Booth 326	HMTX Commercial/Teknoflor/Spartan Surfaces.....	Booth 530
Acoustiblok.....	Booth 201	HOK.....	DG 18
AHF Products .....	Booth 303	Hord Coplan Macht.....	DG 11
Allegion, PLC .....	Booth 401	HSI (Hospital Systems, Inc) .....	Booth 405
Amico Corporation.....	Booth 215	IMEG Corp .....	Sponsor
Amico Lights .....	Booth 316	Infection Control University .....	Booth 434
Arcadis.....	DG 3	INNERFACE Architectural Signage.....	Booth 425
Arcoplast .....	Booth 315	Interface .....	Booth 210
Array Architects.....	DG 16	Johns Manville .....	Booth 110
Attainia from Revalize.....	Booth 430	Kelley Construction.....	Sponsor
AVAddek .....	Booth 409	Kingsway Group.....	Booth 403
Belden.....	Booth 314	● La-Z-Boy Healthcare   Knu Comfort .....	Booth 529
Bestbath .....	Booth 118	Lantana Communications.....	Sponsor
Boldt.....	Sponsor	LEO A DALY .....	DG 12
Bomanite LLC.....	Booth 507	Linbeck Group, LLC .....	Sponsor
Broaddus & Associates.....	Booth 115	Lonseal Flooring .....	Booth 426
BSA LifeStructures .....	DG 8	Mantis Innovation .....	Booth 237
BSD Builders/EDGE LED .....	Booth 116	Marmon Mok Architecture .....	DG 19
Calico Building Services, Inc.....	Booth 220	MazeMap .....	Booth 419
Campos Engineering, Inc.....	Sponsor	McCue Corporation .....	Booth 124
CENTRIA a Nucor Company .....	Booth 410	MDC Interior Solutions .....	Booth 304
Chesapeake Healthcare Planning..	Booth 336	Medical Construction & Design .....	Booth 114
Clark Food Service Equipment & ClarkPro .....	Booth 122	MedViron .....	Booth 532
Clean Work Booth, LLC .....	Booth 320	Mesa Electronics, Inc.....	Booth 101
Coast 2 Coast .....	Sponsor	Modular Services Company.....	Booth 207
Colombo .....	Booth 128	Mohawk Group .....	Booth 414
Comet Signs a Stratus Company .....	Booth 407	National Terrazo & Mosaic Association.....	Booth 325
Concourse Federal Group .....	Booth 332	Neopod Systems .....	Booth 334
CS Illumination .....	Booth 514	NOAH .....	Booth 508
CSSI, LLC .....	Booth 503	Norix .....	Booth 313
CTI .....	Booth 231	Northstar Management Company, LLC.....	Sponsor
Daltile.....	Booth 506	Odulair .....	Booth 436
DLR Group .....	DG 4	Oval Fire Products .....	Booth 432
DPR Construction.....	Sponsor	OWA USA .....	Booth 230
E4H Environments for Health Architecture .....	DG 15	PABCO Gypsum.....	Booth 526
EquipWare LLC.....	Booth 235	Page.....	DG 14
Essex Electronics .....	Booth 203	Palmetto Air and Water Balance.....	Booth 406
ETS-Lindgren .....	Booth 113	Payette.....	DG 7
EVAC .....	Booth 333	Perkins Eastman .....	DG 9
EwingCole.....	DG 10	Perkins&Will.....	DG 13
Forms+Surfaces .....	Booth 331	PEVCO.....	Booth 308
GATE Precast Company.....	Booth 431	Pineapple Contracts .....	Booth 214
Gerflor.....	Booth 502	Q-PAC.....	Booth 108
Guldmann, Inc.....	Booth 523	RAD Technology Medical Systems.....	Booth 119
Hallmark Building Supplies.....	Booth 338	Robins & Morton .....	Sponsor
HDR.....	DG 1	Rogers-O'Brien Construction .....	Sponsor
HGA.....	DG 2	Roppe Corporation .....	Booth 129
Hill & Wilkinson .....	Booth 125	RPS America, Inc .....	Booth 519
		RS Industrial Arts .....	Booth 302
		Serenity Sliding Door Systems.....	Booth 209
		Shen Milsom & Wilke .....	Booth 319
		Sherwood Windows Limited.....	Booth 330
		Sky Factory .....	Booth 102
		Skyler Design Build.....	Booth 413
		Skyline Art Services .....	Booth 420
		Skyline Glass.....	Booth 408
		SLD Technology.....	Booth 229
		SMART ENERGY SOLUTIONS.....	Booth 516
		Smith-Emery .....	Booth 208
		Sonance Lab.....	Booth 505
		SpawGlass .....	Booth 525
		Special-Lite Inc.....	Booth 335
		St. Onge Company.....	Booth 213
		Stance Healthcare .....	Booth 402
		Stantec.....	DG 5
		STERIS.....	Booth 107
		Strongarm Healthcare .....	Booth 225
		Swath Design .....	Sponsor
		Tarkett .....	Booth 106
		The Garland Company .....	Booth 329
		The Haskell Company .....	DG 20
		The Walsh Group.....	Sponsor
		TransLogic, a Swisslog Healthcare Company.....	Booth 520
		Trim USA.....	Booth 120
		Triton Inc.....	Booth 112
		Tsoi Kobus Design.....	DG 17
		Unicel Architectural Corp.....	Booth 219
		Unistrut Midwest.....	Booth 226
		Veritas Medical Solutions .....	Booth 232
		vHealth Lighting.....	Booth 202
		Walters Healthcare Resources ....	Booth 429
		● Whitehall Mfg/AcornVAC.....	Booth 509
		Whoop Wireless .....	Booth 131
		WIELAND Healthcare .....	Booth 305
		Wolf Gordon.....	Booth 510

**8180 Art Consulting, LLC****Booth 310**<https://www.8180art.com/>

8180 art is a full service art consulting firm specializing in all branches of healthcare. Services include art selection, framing and installation nationwide. Backed by 25 years of experience, we provide "outside the box" artwork guided by evidence based design principals (EDAC). We take the work out of artwork.

**Accurate Lock & Hardware****Booth 326**<https://accuratelockandhardware.com/>

Accurate Lock and Hardware offers an extensive range of ligature resistant and ADA-compliant products that positively contribute to healing environments. Accurate's team of experts are dedicated to developing innovative solutions for specific challenges including retrofit scenarios, custom openings and safety compliance. Designed with patient care and staff safety in mind, all Accurate products are made entirely in the USA.

**Acoustiblok****Booth 201**<https://acoustiblok.com/>

For over 20 years Acoustiblok, a NASA "Spinoff-listed" company, has been a leader in developing/manufacturing products for noise control. The company has received the top award in the British House of Commons for sound abatement and was featured globally on Nat'l Geo TV for its contributions towards reducing noise pollution.

**AHF Products****Booth 303**[www.ahfproducts.com](http://www.ahfproducts.com)

Our trusted brands have adorned American homes for over a century, since the late 1800s. With a legacy spanning more than 150 years, AHF brands epitomize innovation and unparalleled excellence. AHF embraces both the rich heritage of our brands and a nimble, forward-thinking approach to flooring solutions that drives value for our partners.

**Allegion, PLC****Booth 401**<https://www.allegion.com/corp/en/index.html>

Allegion helps keep people safe and secure where they live work and visit. With more than 25 brands sold globally we specialize in security around the doorway and adjacent area: everything from interior sliding door systems to commercial locks, exit devices, automatic operators and closers, and electronic access control products.

**American College of Healthcare Architects****Association Partner**<https://healtharchitects.org/>

The American College of Healthcare Architects provides Board Certification for Architects who practice as healthcare specialists. Certificate holders include healthcare architects throughout the United States and Canada with specialized skills and proven expertise.

**Amico Corporation****Booth 215**<https://www.amico.com/>

Amico Corporation designs, manufactures and markets a broad range of products for virtually every department in the health care facility. Our mission is to design and deliver state-of-the-art products that facilitate the caregiver's role in providing the best outcomes for patients.

**Amico Lights****Booth 316**<https://www.amico.com/lights>

Amico Lights is a niche lighting manufacturer focusing solely on the healthcare space. Inspired by user feedback, our products are thoughtfully engineered to provide high-quality lighting solutions that address the common challenges faced in the healthcare environment. Our mission is to deliver lighting solutions that support clinicians with superior lighting performance and functionality while providing patients with visual comfort and personalization to facilitate healing and give them more control over their healthcare experience. By merging lighting performance and design aesthetics, we aim to create products that deliver better clinical outcomes for patients and clinical staff.

**Arcadis****DG 3**<https://www.arcadis.com/>

Arcadis brings together world-class resources and an immensely diverse and inclusive range of passionate thinkers in design, planning and engineering, defining, transforming and building the cities, communities and spaces of tomorrow. By converging highly respected Arcadis-owned brands, we have become the fourth largest architecture practice in the world.

**Arcoplast****Booth 315**<https://www.arcoplast.com/>

Arcoplast develops and manufactures composite walls, ceilings, and specialty joint systems for biocontainment laboratories. Arcoplast's proprietary Gel Coated Glass-Fiber and Acryloyl Engineered Polymer panels are complemented with our patented anti-seismic spline, structural adhesives and Bio-Seal finishing compounds, delivering the highest-level performance in primary barrier envelopes for Biosafety laboratories, USP 797-800 compliance and pharma cleanroom facilities.

**Array Architects****DG 16**<https://array-architects.com/>

As a design firm 100% dedicated to healthcare, Array is an integrated practice layering design, strategy and technology to help clients overcome challenges and thrive.

**Attainia from Revalize****Booth 430**<https://revalizesoftware.com/attainia/>

Attainia from Revalize enables you to optimize and accelerate medical equipment planning with PLAN-IT—a collaborative project management platform with a robust, integrated equipment catalog and pre-built room templates. More than 1,000 member hospitals have chosen PLAN-IT to reduce time-to-open, streamline complexity, and minimize costs. To learn more about PLAN-IT, please visit <https://revalizesoftware.com/attainia>.

**AVADEK****Booth 409**<https://www.avadek.com/>

Established in 1993, AVADEK is the leader in manufacturing and installing architectural canopy systems using high-quality extruded aluminum. We've provided design assistance and installed thousands of entry canopies, walkway covers, carpools, sunshades, and more across the United States since opening our doors. Our team is our foundation, and with in-house engineering, drafting, and quality control departments, we have both the expertise and resources to assist with any project from conception to completion. We pride ourselves on presenting innovative solutions and bringing brilliant design concepts to life.

**Belden****Booth 314**<https://www.belden.com/>

Belden Inc. delivers the infrastructure that makes the digital journey simpler, smarter and secure. We're moving beyond connectivity, from what we make to what we make possible through a performance-driven portfolio, forward-thinking expertise and purpose-built solutions. With a legacy of quality and reliability spanning 120-plus years, we have a strong foundation to continue building the future. We are headquartered in St. Louis and have manufacturing capabilities in North America, Europe, Asia, and Africa. For more information, visit us at [www.belden.com](http://www.belden.com); follow us on Facebook, LinkedIn and Twitter.

**BELDEN****Bestbath****Booth 118**<https://bestbath.com/>

Bestbath is the world's leading manufacturer of bathing products. Our products - from walk-in tubs to traditional shower inserts - are designed to be functional and beautiful, but also easily modified as needs and abilities change. Bestbath works closely with architects, commercial developers, and homeowners to ensure function for years to come.

**bestbath**  
Intelligent Designs

**Boldt****Sponsor**<https://www.boldt.com/>

Boldt is a nationally recognized leader in healthcare construction, providing Integrated Lean Project Delivery®, construction management, general contracting, design-build, prefabrication and modular solutions, and real estate development services. When you choose Boldt you can expect an efficient, future-ready facility, built to meet the ever-changing needs of modern healthcare.

**BOLDT****Bomanite LLC****Booth 507**

Bomanite develops, manufactures, and supplies materials and training for a wide range of decorative concrete and terrazzo systems. Bomanite's Exposed Aggregate Systems are ideal for durable, decorative pavements, while the Modena Systems offers versatile, high-traffic flooring with various color and aggregate options.

**Broadbuss & Associates****Booth: 115**[broadbussusa.com](http://broadbussusa.com)

Serving owners during all phases of planning, design, and construction, our purpose is simple, but effective: providing unmatched experience and unwavering Best Practices. Since 2001, our firm has managed projects totaling more than \$16B in total cost, \$10B of which has been for healthcare and research facilities.

**BSA LifeStructures****DG 8**<https://www.bsalifestructures.com/>

BSA LifeStructures is an integrated design firm creating inspired solutions that improve lives through architecture, engineering, interior design, and planning services. With national expertise and regional leadership, BSA designs innovative and inviting spaces that not only house the activities of healing, learning, and discovery but contribute to them - to make a difference for our clients and communities.

**BSA****BSD Builders/EDGE LED****Booth 116**[www.bsdbuilders.com](http://www.bsdbuilders.com)

BSD Builders is an integrated design build engineering and construction company that focuses on complex energy solutions from the central plant to the complete building envelope in power generation, energy efficiency, sustainability, and resiliency. Our solutions all pay for themselves with energy savings and government subsidies saving our clients millions.

**Calico Building Services, Inc.****Booth 220**<https://www.calicoweb.com/>

Calico Building Services stands at the forefront of the industry, offering a comprehensive suite of building solutions. With expertise spanning janitorial, repairs/maintenance, and construction services, our three divisions seamlessly deliver excellence. Trust us as your premier partner for quality service in the healthcare industry.

**Campos Engineering, Inc.****Sponsor**[www.camposengineering.com](http://www.camposengineering.com)

Campos Engineering (Campos) is a nationally recognized firm that was founded in 1983 and rooted in Texas with five (5) regional offices. The firm provides a tailored approach toward each project and applies more than 40 years of expertise to deliver professional engineering services.

**CENTRIA a Nucor Company****Booth 410**<https://centria.com/>

CENTRIA, a Nucor company, innovations in architectural metal wall and roof systems are helping building teams around the world envision metal as the future of the building envelope. From inspiration through installation, CENTRIA provides the highest level of expertise including service and support from an elite Dealer Network. Our metal architectural systems are the perfect combination of science and aesthetics, offering advanced thermal and moisture protection technology, the broadest spectrum of design options, truly integrated components, and superior sustainability. We invite you to explore the limitless possibilities metal provides for your next project at CENTRIA.com.

**Chesapeake Healthcare Planning****Booth 336**

CHESAPEAKE HEALTHCARE PLANNING™ is comprised of 2 companies, (CHP and CPC); providing Medical Equipment Planning, Transition Planning, Procurement Services, and Operational Readiness services during the planning of medical renovations and new builds. Our companies have both WOSB and SDVOSB certifications, and provide services to VA/DOD and Commercial Medical Facilities.

**Clark Food Service Equipment & ClarkPro****Booth 122**[cfse.biz](http://cfse.biz)

Clark Food Service Equipment and ClarkPro work seamlessly to provide solutions for your evolving needs. CFSE offers Equipment Contracting, Turnkey Construction, and Design Services with an in-house team of experts providing technical skills and innovative solutions. ClarkPro focuses on B2B partnerships through distribution and a customized platform offering a wide range of products such as food service equipment, smallwares, disposables, and office, janitorial, and industrial supplies. Together, CFSE and ClarkPro handle complex customer needs, unique designs, and large capital bulk purchases.

**Clean Work Booth, LLC****Booth 320**[www.cleanworkbooth.com](http://www.cleanworkbooth.com)

Clean Work Booth is a manufacturer of specialty products used to protect people and equipment within quality controlled environments from hospital buildings to electrical/computer hubs. Our mission at Clean Work Booth is developing durable, job-flexible, safe and sustainable containment solutions protecting patients and equipment from dust and pathogens in healthcare and technology environments.

**Coast 2 Coast****Sponsor**<https://www.coast2coast.net/>

Coast 2 Coast is an architectural services company specializing in laser scanning, as-built surveying, 3D modeling, and reality capture. Our existing condition documentation for healthcare construction and renovation projects helps streamline design-build strategy and implementation.



**Colombo****Booth 128**<https://colombopts.com/>

Built from the ground up around an ever-changing industry with your needs in mind. We offer the most comprehensive product line in the market, today. Specimen and material transfer to meet the needs of your facility, without hidden costs or fees.

**Comet Signs a Stratus Company****Booth 407**<https://www.cometsigns.com/>

Comet Signs operates on a national basis and is supported by five Texas locations, three of which house over 250,000 square feet of state-of-the-art manufacturing space. Headquartered in San Antonio with a 180,000 square foot manufacturing facility, Comet provides program and custom sign fabrication. With 26 installation crews based across Texas and access to over 4,000 Stratus' field partners across the nation.

**Concourse Federal Group****Booth 332**

Founded in 2009, Concourse Federal Group (CFG) is a successful Service-Disabled Veteran-Owned Small Business and a national leader in healthcare facilities with our advanced software, CHPS 360. We are dedicated to advancing our clients' missions with high-quality professional services.

**CS Illumination****Booth 514**

A lighting distributor with a vision to change the way lighting is specified and purchased in the marketplace. We strive to remove the layers of pricing while achieving high performance lighting. We bring stakeholders together to streamline decision making and help avoid cost overruns, overages, late deliveries and poor lighting.

**CSSI, LLC****Booth 503**

CSSI is committed to being the best partner at transforming complex tax regulations into tangible financial benefits through proven technology and enduring relationships for our clients. We guide commercial property owners through advanced tax strategies including cost segregation, research & development, and energy efficiency studies to increase cashflow.

**CTI****Booth 231**<https://www.cti.com/>

CTI are specialists who ensure the technology, processes, and staff are the most knowledgeable and efficient resource to serve you. We have a pulse on the present and an outlook to the future. CTI is not content to be idle and react to the industry trends, but are driven to steer the direction of AV-IT convergence and embrace the vast changes ahead in the field. We work to make your work better.

**Daltile****Booth 506**

Daltile is the best-selling tile brand in America and the largest ceramic manufacturer in the world. We're dedicated to creating the best value for our customers through innovative, high-quality products and exceptional customer service. Our portfolio goes beyond tile and includes LVT, quartz countertops, resilient flooring, and exterior products.

**DLR Group****DG 4**<https://www.dlrgroup.com/>

DLR Group is an integrated design firm and leader in innovative, patient-focused design. Pioneering design for unique procedures, equipment, and research, our passion for state-of-the-art design is infused into our approach to every phase of design. At the core of our practice is our commitment to listen, design, and deliver.

**DPR Construction****Sponsor**<https://www.dpr.com/>

DPR Construction is a forward-thinking, self-performing general contractor and construction manager specializing in technically complex and sustainable projects for the advanced technology/mission critical, life sciences, healthcare, higher education, and commercial markets. DPR's portfolio of work ranges from large-scale new construction to small tenant improvements and special projects. <http://www.dpr.com>

**E4H Environments for Health Architecture****DG 15**<https://e4harchitecture.com/>

Committed exclusively to the design of innovative healthcare and health science + technology facilities, E4H Environments for Health Architecture is a national architecture firm focused on improving outcomes through inspired design. Our team of 240 future-focused strategists, visionary designers, and architects create flexible, state-of-the-art facilities designed to enhance wellbeing for communities, staff, patients, and families. With over four decades of experience, we provide value to our clients through the design of Lean, economically and environmentally sustainable spaces. E4H's unique process fosters collaboration and drives next-generation solutions to complex challenges encountered in today's healthcare and health science + technology landscape. Combining experience with for-profit and non-profit institutions allows us to provide efficient, speed-to-market solutions for our clients.

**Engineered Systems****Media Sponsor**<https://www.esmagazine.com/>**Environmental Design Research Association****Association Partner**<https://www.edra.org/>**EquipWare LLC****Booth 235**<https://www.equipware.com/>

EquipWare™ is a next generation cloud-based planning software system that offers subscribers the customization, intuitive user interface, and features that enhances planning efforts for projects. EquipWare™ is designed around the workflow and process utilized for planning Medical Equipment, Furniture, & Artwork including Procurement and Installation activities. EquipWare™ is designed to drive efficiencies and assist in controlling project costs by providing real-time access to your project details including; budget, schedules, issue tracking, inventory, requisitions, specifications and much more.

**Essex Electronics****Booth 203**<https://www.keyless.com/>

Premium Touch and Touchless Access Control Solutions. For over 45 years, Essex Heavy Duty Keypads, Ruggedized Card Readers, Touchless Door Access Switches and Keyless Entry® Access Control Systems have become the choice of security professionals worldwide. Aesthetically designed, Essex touchless solutions are ideal for healthcare facilities to protect patients, visitors and staff by reducing the spread of Healthcare Associated Infections (HAI's). Essex iRox LR™ Smart Card readers are specified for behavioral healthcare applications. They feature Genuine HID Technology™ and a low profile, vandal and ligature resistant design. Hand-E-Wave™ touchless door access switches utilize Doppler Radar technology to provide reliable and consistent switch operation. Superior quality, Professional Grade Access Control solutions proudly designed and manufactured in the USA.

**ETS-Lindgren****Booth 113**<https://www.ets-lindgren.com/>

ETS-Lindgren's MRI products include Shielding, Flooring, Doors, ClearShield® Windows, energy efficient LED lighting, FMDS protection, and oxygen monitoring systems. Services include installation, testing, and site surveying. For more information visit our website at [www.ets-lindgren.com](http://www.ets-lindgren.com) or contact us at [sales@ets-lindgren.com](mailto:sales@ets-lindgren.com).

**EVAC****Booth 333**<https://evac.com/>

EVAC- is the world's leading provider of integrated water and wastewater management systems for the building industry. Our wide range of solutions, products, and technologies offer a comprehensive one-stop offering to meet all your needs. One of the most notable benefits is 80-90% water savings. The system is cleaner, more hygienic, and minimizes typical gravity drain odors and bacteria during operation. Gravity free vacuum collection systems benefit your healthcare & life science projects. They can be used in most commercial applications such as healthcare, hospitality, office, schools/universities, prisons, and any high traffic buildings. We have also installed vacuum collection and treatment systems in remote locations that cannot connect to conventional sewer systems for flushing and/or draining. If you and/or your clients demand a green, hygienic, sustainable wastewater collection system EVAC can help. One of the most notable benefits is 80-90% water savings. Benefits also include efficient fast installation, little to no core drilling or trenching in existing slabs, smaller diameter piping, endless options for running the pipes including upward vertical collection. The system is cleaner, more hygienic, and minimizes typical gravity drain odors and bacteria during flushes (very important today in public rest rooms. NSF testing available). Has a very small footprint with no additional pumping stations for drainage, and the option to leave fixture placement up to tenants.

**EwingCole****DG 10**<https://www.ewingcole.com/>

EwingCole is a nationally recognized, fully integrated architecture, engineering, interior design, and planning firm of over 400 professionals. With offices in Baltimore, Charlotte, Irvine, New York, Philadelphia, Pittsburgh, Raleigh and San Diego, we design places that make better communities, with particular emphasis on communication, thoughtfulness, and collaboration.

**Forms+Surfaces****Booth 331**<https://www.forms-surfaces.com/>

From inclusive outdoor furniture to captivating architectural surfaces, we guarantee enduring solutions that seamlessly blend aesthetics with functionality. Embracing sustainability and customization, we create products that contribute to the visual appeal, enduring functionality, and overall experience of the spaces they inhabit.

**GATE Precast Company****Booth 431**<https://gateprecast.com/>

GATE Precast operates nine manufacturing facilities with the most diverse and sustainable product lines of prefabricated concrete systems. GATE's expertise in design-assist collaborations with national level design firms, combined with their wide range of unitized façade solutions, structural components for parking structures, and interior solutions manufactured with high-performance concrete, make them an invaluable partner in healthcare construction.

**Gerflor****Booth 502**[gerflorusa.com](http://gerflorusa.com)

For over 80 years, Gerflor has been a global leader in crafting, producing, promoting, and distributing cutting-edge, environmentally responsible flooring solutions. Our extensive product line caters to commercial healthcare, education, sports, and industry spaces.

**Guldmann, Inc.****Booth 523**

Guldmann's GH3 ceiling lift integrates smoothly with both new and existing buildings and other structures. From the mounting brackets to the rails, lifting modules, hangers, hand control units and power chargers, our designers focused on providing surfaces, colors and shapes that help architects, consulting engineers and interior designers create an attractive contemporary design that will last.

**Guldmann™****Hallmark Building Supplies****Booth 338**<https://www.hllmark.com/>

Founded in 1974, Hallmark Building Supplies, Inc. brings our integrated system of marketing, sales and distribution of branded building materials to the residential and commercial markets. We are headquartered in Waukesha, WI and our product lines include Corian® Design, DuPont Building Envelope Solutions, Tyvek® Protec™ Roofing Underlayments, and Levanté® Architectural Aluminum.

**HDR****DG 1**<https://www.hdrinc.com/>

At HDR, we believe very healthcare environment should be as unique as its context. That's why we embrace a deep understanding of our clients' missions and then design with empathy for patient, family and staff experience. Our multidisciplinary staff advances health and well-being in local communities and on a global scale.

**Healthcare Tech Outlook****Media Sponsor**<https://www.healthcaretechoutlook.com/>

Healthcare Tech Outlook, a print platform offering healthcare decision-makers critical information on adopting, innovating, and building new programs and approaches to enhance their capability to provide care. Healthcare Tech Outlook has been a pioneer in offering a learn-from-peer approach to the healthcare arena, offering technical advice to enhance both the overall healthcare landscape and assist individual care providers from general practitioners and specialists to post-acute care organizations.

**HGA****DG 2**<https://hga.com/>

HGA is an interdisciplinary design firm serving clients across the country. We deliver elegant solutions to complex challenges that increase operational efficiency, improve clinical outcomes, and elevate human experience in healthcare environments. Our impact-seeking experts and collaborators merge research, ethnography, lean process improvement, data, and design to transform environments of health through holistic, value-driven design.

**Hill & Wilkinson****Booth 125**[www.hwgc.com](http://www.hwgc.com)

We have built healthcare facilities that span a range of project types, including full replacement hospitals, medical office buildings, surgery suites, critical access facilities and emergency department renovations and additions in occupied settings. Healthcare projects are recognized as one of the most complex project types in the construction industry and they should be trusted to an expert like Hill & Wilkinson.



## HKS

DG 6

<https://www.hksinc.com/>

HKS is a global firm of architects, interior designers, researchers, urban designers, nurses, anthropologists and more, united around serving our clients with limitless thinking. Every project is infused with a distinct sense of place, a connection to the surrounding community and a recognition of the healing properties of nature.

HKS

## HMTX Commercial/Teknoflor/Spartan Surfaces Booth 530

<https://www.hmtxcommercial.com/>

Teknoflor is a major manufacturer and distributor of high-performance flooring products with a strong focus on Healthcare and Senior Care environments. Teknoflor is a proud member of the HMTX Family.

## HOK

DG 18

## Hord Coplan Macht

DG 11

<https://www.hcm2.com/>

Hord Coplan Macht is an integrated firm offering planning, architecture, landscape architecture, interior design and environmental graphic design with offices in Baltimore, Maryland; Charlotte, North Carolina; Denver, Colorado; Hilton Head Island, SC; and the DC Metro area. We combine the goals of creating functional yet inspiring spaces with the principles of innovation, thoughtful design, technical strength, collaboration and financial responsibility to uphold our clients' best interests and deliver high performing environments for the future.

## HSI (Hospital Systems, Inc.)

Booth 405

<https://www.hsiheadwalls.com/>

HSI (Hospital Systems, Inc.) is a unique build-to-order headwall manufacturer working with our customers from concept to completion. With a 12 year warranty, HSI stands strong behind every product. As a Small, Women Owned, Green Business, HSI organically fills the diversity and environmental roles on a project with exceptional products and customer service. Being build-to-order allows HSI to exceed expectations in meeting clinical needs while melding with the aesthetic vision.

## IMEG Corp

Sponsor

<https://www.imegcorp.com/>

With a history that dates back over 100 years, IMEG has grown under one unifying purpose: creating positive outcomes for people, communities, and our planet. As a people-centered, national engineering and design consulting company, we've intentionally localized our focus to serve carefully chosen regions and markets, allowing us to put relationships and communities first, without sacrificing expertise. Our specialties include the built environment, building optimization, infrastructure, planning, and construction engineering-related services, but our secret to success is found in our deep bench of 2,800 team members across 90+ locations. For us, people-centered engineering is about more than the people we serve – it's representative of the engaged employee culture we've worked hard to create. We believe in investing in our people and their professional futures through continuous training, community involvement, and the ability to develop a niche specialty.

## Infection Control University

Booth 434

[www.InfectionControlUniversity.com](http://www.InfectionControlUniversity.com)


## INNERFACE Architectural Signage

Booth 425

<https://innerfacesign.com/>

Founded in 1971, INNERFACE is a full-service signage and wayfinding provider. We first patented the changeable frame and insert system in 1982 and continue to innovate in creating modular interior and exterior signage and wayfinding systems. Our environmental graphic design professionals have extensive experience creating effective signage and wayfinding systems in complex environments.



## Interface

Booth 210

<https://www.interface.com/US/en-US.html>

Interface is a global leader in modular flooring, offering an integrated collection of carpet tiles and resilient flooring that includes luxury vinyl tile (LVT), vinyl sheet, rigid core and nora, rubber flooring to help create modern healthcare facilities that can improve operational efficiencies and wellness enhancing the patient and staff experience.

## Johns Manville

Booth 110

<https://www.jm.com>

Johns Manville, a Berkshire Hathaway company (NYSE: BRK.A, BRK.B), is a leading manufacturer and marketer of premium-quality building and specialty products. In business since 1858, the Denver-based company has annual sales over \$4 billion and holds leadership positions in all of the key markets that it serves. JM employs 8,000 people and operates 44 manufacturing facilities in North America and Europe. Additional information can be found at [www.jm.com](http://www.jm.com).

## Kelley Construction

Sponsor

<https://www.kelleyconstruction.com/>

Kelley Construction is America's new culture of construction, redefining building innovation and elevating the building experience. Kelley employs industry-leading construction strategies based upon insight, technology, and talent, centered around a joy for building and a passion for delivering service excellence. With offices in Louisville, KY and Dallas, TX, our diverse range of experience in healthcare, commercial, food service, industrial, and energy infrastructure provides our clients with a unique and well-rounded perspective for any construction needs they may have.

## Kingsway Group

Booth 403

Kingsway Group is a specialist manufacturer of ligature-resistant products designed to improve safety and enhance the healing environment in behavioral healthcare. Our globally trusted solutions have been the preferred choice in over 10,000 projects worldwide, selected for their robust yet non-institutional design and proven performance in challenging environments. As Your Partner in Patient Safety, we exist to support you in delivering excellence in care. From large complex new builds to refurbishment projects, our philosophy of 'Define, Design and Deliver' ensures we provide the best possible outcomes for your facility, staff, and clients.



## La-Z-Boy Healthcare | Knu Comfort Feature Area • Booth 529

<https://getknu.com/>

La-Z-Boy Healthcare | Knu Comfort is a healthcare furniture manufacturer that delivers high performance upholstered products for the patient room and public area spaces, while offering the industry's most comprehensive recliner offering and options. Our mission is to provide the best-in-comfort furnishings for healthcare and wellness environments.





## EXHIBITORS



HEALTHCARE  
FACILITIES  
symposium and expo

### Lantana Communications

Sponsor

[lantanacom.com](http://lantanacom.com)

Lantana will help you design, install & maintain your voice and data solutions specific to your healthcare facility needs. We have experience with large hospitals, clinics, multi-location facilities and individual medical offices. We handle cabling, internet, on prem or VOIP telephony, and IT remote or onsite support.

### LEO A DALY

DG 12

<https://leoadaly.com/>

LEO A DALY's creative teams combine planning, architecture, engineering and interiors expertise to offer a holistic response to our clients' challenges. For over 100-years, we've created places that inspire wonder, connect communities and enable great things. Our design approach is energized by inquiry, focused on innovation and rooted in social responsibility.

### Linbeck Group, LLC

Sponsor

<https://www.linbeck.com/>

Linbeck is a recognized leader in the delivery of healthcare facilities. Working with well-known healthcare architects has enabled us to build strong relationships with industry leaders. As a result, more than half our revenue is directly related to healthcare projects, both large and small. Linbeck has offices in Houston, Central Texas (Austin), and North Texas (Fort Worth). While our main building focus remains in Texas, we work with clients throughout the United States, particularly for healthcare-related projects. Our healthcare construction portfolio consists of: Hospitals, Medical Office Buildings, Ambulatory Care Centers, Specialty Clinics, Proton Therapy Facilities, and Renovations to Medical Facilities.

LINBECK

### Lonseal Flooring

Booth 426

<https://lonseal.com/>

Establishing wellness and comfort in healthcare settings requires blending care with aesthetics. For 53 years, Lonseal has led this effort, offering resilient sheet vinyl flooring in diverse colors and patterns. Our flooring provides the essential foundation for designing visually appealing and functional spaces for patients, caregivers, and staff.

### Mantis Innovation

Booth 237

<https://mantisinnovation.com/>

Mantis Innovation offers a comprehensive and strategic set of solutions for managed facility services.

We're looking at the entire facility, inside and out, and can impact 70% of what a building operator allocates critical budget dollars toward. Our turnkey solutions maximize results at every touchpoint of facility performance. Our technology platforms make those touchpoints accurate and visceral, backed by data from billions of feet of facility space. We offer all of this with a white glove service, meaning our clients receive an unparalleled level of professionalism and care.



### Marmon Mok Architecture

DG 19

Marmon Mok Architecture is one of the largest healthcare planning and design practices in Texas providing evidence-based strategies that respond to rapid changes in our world. Comprehensive design services include architecture, feasibility studies, medical planning, interior design, FF&E, and internal code reviews for state and local compliance.

### MazeMap

Booth 419

MazeMap specializes in advanced indoor mapping solutions for healthcare facilities. Our intuitive platform significantly reduces missed appointments and enables live asset visualization. With real-time navigation and interactive maps, MazeMap enhances the patient and staff experience, ensuring efficient hospital wayfinding and effective management of medical resources and equipment.



### McCue Corporation

Booth 124

At McCue, we create innovative safety products that protect people where they work, shop and play. We design, make, install and support our full portfolio of safety solutions for hospitals, retailers, industrial facilities, and everywhere in between. Our main goal is to make safety easy and accessible for all!



### MDC Interior Solutions

Booth 304

<https://www.mdcwall.com/>

MDC is your single source, total solution for bespoke interior finishes. Our innovative art program integrates distinctive art pieces, enhancing both aesthetics and emotional resonance. We also offer custom wall graphics that transform spaces with personalized visual storytelling, tailored acoustical solutions to optimize sound dynamics, and specialized window shades that combine functionality with design, providing precise light control while complementing the overall style of any room.



### Medical Construction & Design

Booth 114

<https://mcdmag.com/>

Medical Construction & Design magazine - the industry's leading source for current news, technology and methods, reaches all disciplines involved in the healthcare construction and design process. Visit [www.mcdmag.com/subscribe](http://www.mcdmag.com/subscribe) to sign up for a free subscription.

### MedViron

Booth 532

[www.medViron.com](http://www.medViron.com)

MedViron's overarching goal is to design and manufacture aesthetically pleasing, high quality, extraordinarily cleanable healthcare equipment. Hospital equipment designed to assist in expeditious and thorough cleaning aid in the all-important quest to reduce the risk of hospital-acquired infections.

### Mesa Electronics, Inc.

Booth 101

<https://mesaelectronics.com/>

For over 30 years, Mesa Electronics has provided integrated Audio/Visual and Patient room entertainment solutions to healthcare customers across the US. We offer complete turnkey support to customers on projects both large and small.



### Modular Services Company

Booth 207

<https://modularservices.com/>

Modular Services Company has been manufacturing prefabricated healthcare products for over half a century. Our solutions range from prefabricated headwalls to booms to complete patient room collections. With thousands of installations in all types of hospitals, of every acuity level, we are experts in helping you prefab your way to the perfect patient space!



## EXHIBITORS



HEALTHCARE  
FACILITIES  
symposium and expo

### Mohawk Group

Booth 414

<https://www.mohawkgroup.com/>

Mohawk Industries is the largest floor-covering manufacturer in the world. Learn how our focus on evidence based design leads to optimal environments for care and healing. Our comprehensive range of high performance products provides a single source for the specialized flooring needs of large acute care and specialty care facilities.



### National Terrazzo & Mosaic Association

Booth 325

<https://ntma.com/>

The National Terrazzo & Mosaic Association has been setting the standards for terrazzo since 1923. We offer assistance throughout the design and installation process. Specifications are available online. Our Technical Advisor can answer your specific questions while NTMA contractor and associate members will ensure a floor of exceptional quality.

### Neopod Systems

Booth 334

[www.neopodsystems.com](http://www.neopodsystems.com)

### NOAH

Booth 508

<https://aesthetics.net/>

### Norix

Booth 313

<https://norix.com/>

For over 40 years, Norix has been a leader in designing innovative, robust furniture that meets the real-world need for humanizing challenging environments. Our collection of specially designed, intensive use furniture is engineered to provide safety, security, and extreme durability for healthcare facilities and behavioral healthcare environments. Norix contributes to a sustainable future by offering a variety of products that are recyclable, are made from recycled content and are proudly made in the USA at our LEED Gold Certified headquarters.

### Northstar Management Company, LLC

Sponsor

<https://northstarmgmt.com/>

Northstar Management Company is an "independent" Program Management firm founded in 1998. We bring extensive experience to help guide healthcare organizations through a proven Capital Project Process, which results in consistently delivering project solutions that are completed on time, within budget, and meet/exceed the Owner's business/strategic objectives.



### Odulair

Booth 436

<https://www.odulair.com/>

Odulair is the world's leading manufacturer of mobile and modular medical facilities for temporary or permanent use. These include USP 800 Pharmacies, Sterile Processing Service, Surgery Centers, Endoscopy Suites, ER's and more for lease or purchase.



### Oval Fire Products

Booth 432

<https://www.ovalfireproducts.com/>

Oval Fire Products manufactures low-profile fire extinguishers and fire extinguisher cabinets. Oval brand fire extinguishers are designed to assist with ADA compliance issues in healthcare facilities, while meeting fire protection requirements.



### OWA USA

Booth 230

<https://www.owa.de/us/>

OWA is a German ceiling manufacturer that only does ceilings. Our products are produced using rich, organic materials to create a dense solid core and to reduce carbon. Virtually all of our acoustical products are Red List Free and ISO4 rated. Ideal for areas needing to improve Indoor Air Quality.



### PABCO Gypsum

Booth 526

<https://pabco gypsum.com/>

Family owned and operated, PABCO® Gypsum has been providing top quality gypsum panel products and superior customer service throughout North America for more than 45 years. The company produces a broad range of gypsum panels for residential and commercial applications including mold, fire, glass mat, sound and impact-resistant boards. This includes QuietRock®, the first and most technically advanced sound reducing gypsum panel in the industry. PABCO® Gypsum, along with PABCO® Paper and PABCO® Roofing Products are divisions of PABCO® Building Products LLC that services the building industry in the United States and Canada. We will be showcasing our QuietRock® product portfolio at the show. When it comes to patient healing and wellness, sound control can play a significant role. Achieve quieter spaces simply by including QuietRock Sound Reducing Drywall in your wall assemblies between patient rooms, consultations spaces, and exam areas to reduce the sound transmission. Patients will enjoy a restful night's sleep, greater privacy, and reduced stress levels contributing to faster recovery and overall patient satisfaction.



### Page

DG 14

<https://www.pagethink.com/>

At Page, we believe roots of Healthcare design must focus on issues at a human level. It is more than a business; it is a commitment to creating positive experiences for patients, families, visitors and staff. Health facilities must be sustainable, affordable, comforting and improve not only individual lives but entire communities.



### Palmetto Air and Water Balance

Booth 406

Palmetto is a leader in the Testing, Adjusting and Balancing industry, providing validation of ventilation, comfort, and efficiency for occupants working in Healthcare, Life Sciences, Education, Institutional and Industrial Facilities. Established in 1989, our teams have supported Healthcare facilities across the country by providing world-class service, utilizing innovative data-collection technology, while keeping client and patient needs a priority.

### Payette

DG 7

<https://payette.com/>

Payette is a leading architectural firm in Boston. We are a design collective driven to create boldly original buildings for science and healthcare that are as profoundly humane in their accommodation of needs as their pursuit of environmental performance. Payette is the 2019 AIA Architecture Firm Award Recipient.



### Perkins Eastman

DG 9

<https://www.perkinseastman.com/>

Founded in 1981, Perkins Eastman has grown to more than 1,100 employees and 24 studios around the world. Through our work with top-ranked institutions, we continually look to establish new facility models that respond to today's technological, operational, and functional requirements, all while setting the pace for industry innovation.



**Perkins&Will****DG 13**<https://perkinswill.com/> Documents

We provide resilient, sustainable, high-performance, and environmentally conscious design and planning solutions that elevate the human experience and contribute to health. Comprehensive services include master planning, programming, planning and strategies, architecture, interior design, and branding for clients ranging from ambulatory care to medical research and acute care facilities worldwide.

**Perkins&Will****PEVCO****Booth 308**<https://pevco.com/>

Pevco, the leading pneumatic tube system manufacturer headquartered in the U.S., has been providing high quality, reliable pneumatic tube delivery systems to hospitals for over 45 years. Focused exclusively on healthcare, Pevco understands that fast accurate delivery of pharmaceuticals, specimens, and blood products is vital to providing the best patient care.

**Pineapple Contracts****Booth 214**<https://us.pineapplecontracts.com/>

Pineapple Contracts have been creating furniture for demanding environments for over 40 years. We focus on rethinking and enhancing the environments of clients by providing style and quality, with carefully designed safety and durability features. Our knowledge and experience enables us to solve the problem.

**Pineapple****Q-PAC****Booth 108**[www.q-pac.com](http://www.q-pac.com)

Q-PAC innovated the semi-custom commercial HVAC fan system solution. Our FS1 Fan System evolved on the idea of a scalable, single-point fan array utilizing energy efficient ECM technologies. We simplify installation and operation with plug-and-play components, zero maintenance, and built-in redundancy. Focusing on retrofit upgrades and OEM applications, We're Simply efficient.

**RAD Technology Medical Systems****Booth 119**<https://www.radtechnology.com/>

RAD provides complex, design-built modular facilities for the healthcare industry. These customized, factory-fabricated solutions are completed up to 50% faster than standard construction and are installed for temporary, interim or permanent use. RAD's Operating Leases require no capital, allowing projects to commence and complete sooner and customers to generate revenue faster.

**RAD**  
MODULAR MEDICAL FACILITIES**Robins & Morton****Sponsor**<https://www.robinsmorton.com/>

Founded in 1946, Robins & Morton is a privately-held construction firm committed to making a lasting impact on the people and companies we partner with. Dedication to our core values, coupled with our Building Forward® approach, enables us deliver exceptional results on every project. To learn more visit: [www.robinsmorton.com](http://www.robinsmorton.com)

**ROBINS & MORTON**

Building With Purpose®

**Rogers-O'Brien Construction****Sponsor**<http://www.r-o.com/>

Since 1969, Rogers-O'Brien has firmly established itself as Texas' Premier Builder by providing a wide range of preconstruction and construction management services. Our unique approach consistently delivers high-quality buildings in a variety of market sectors, exceeding the most demanding expectations.

**Rogers-O'Brien**  
CONSTRUCTION**Roppe Corporation****Booth 129**<https://roppe.com/>

Leading commercial flooring manufacturer Roppe Corporation, produces a wide selection of rubber/vinyl wall base, tile, tread and accessories. Rubber flooring products are great solutions for health care environments due to life cycle cost, durability and color palette options that encourage timeless design. Featured products include Envire Rubber Sheet/Tile and FlashCove.

**RPS America, Inc****Booth 519**<https://www.rielloupsamerica.com/>

Riello provides high quality power battery backup systems for the most critical electrical loads worldwide. Our products are manufactured in Italy via two manufacturing facilities, and we stock these products in the USA. Our clients are Healthcare facilities where we provide conditioned power and battery back up for imaging machines.

**RS Industrial Arts****Booth 302**<https://www.rsindustrialarts.com/>

RS Industrial Arts is a custom architectural fabricator specializing in the design and manufacturing of ADA signage, architectural metal elements, and lighting solutions. Our expertise ensures compliance and quality, enhancing healthcare environments with functional, aesthetically pleasing solutions. We pride ourselves on innovation and craftsmanship, providing tailored products to meet the unique needs of Healthcare facilities.

**Serenity Sliding Door Systems****Booth 209**<https://serenityslidingdoor.com/>

As an industry-leader for sliding door projects nationwide, Serenity provides a wide range of space-saving systems, complete with door, frame, and hardware. Through soft-closing technology, sound seals, and a concealed floor guide, their systems deliver an excellent user experience. Heavily customizable, Serenity offers multiple finishes and hardware options, including various locks and access control solutions. Systems are also available with NIC 40, STC 35, or UL1784 ratings.

**Shen Milsom & Wilke****Booth 319**<https://www.smwllc.com/>

Founded in 1986, SM&W is an independent, internationally recognized technology consulting firm with 15 offices. By providing coordinated medical equipment planning, IT, acoustic, audiovisual, and security consulting services, we ensure an efficient, cost effective, single source solution. Our team of healthcare experts offers guidance from budgeting and planning through procurement.

**Sherwood Windows Limited****Booth 330**<https://www.sherwoodwindows.com/>

Sherwood has been providing custom aluminum architectural glazing solutions for over 60 years. We have developed specialty products to serve three distinct segments: Architectural, Detention, and Mental Healthcare. It's a delicate balance for us, in that our experience in detention allows us to provide the security Mental Healthcare demands.



## EXHIBITORS



HEALTHCARE  
FACILITIES  
symposium and expo

### Sky Factory

Booth 102

<https://skyfactory.com/>

Sky Factory, a global fine arts and technology company, creates biophilic illusions of nature™—Luminous SkyCeilings™, Luminous Virtual Windows™—and Digital Cinema systems, SkyView™, eEscape™ and eSea™. These therapeutic, simulated views to nature trigger an automatic “Relaxation Response” that enhances psycho-physiological well-being, transforming enclosed interiors into restorative and healing environments.



### Skyler Design Build

Booth 413

<http://skylerdesignbuild.com/>

Skyler Design Build is a construction, project management, development, maintenance and consulting firm that provides integrated services to real estate, medical, government, education, aviation and energy markets. Since 2014, Skyler's multidisciplinary project teams provide turnkey services to help clients implement complex projects from initial concept to delivery and operation. A broad range of commercial, medical, residential, and government clients depend on Skyler for customized and complete solutions to their toughest construction challenges. With presence across the United States, Skyler is a full-service construction management, project development, and general contracting firm. Skyler's services are competitively priced focusing on high quality standards and project safety at a low overhead with very efficient and well-organized project teams.



### Skyline Art Services

Booth 420

<https://skylineart.com/>

For 34 years, Skyline Art has provided evidence-based art programs to healthcare clients seeking to enhance the experience of their patients, guests, and employees through visual art. We offer turnkey services, including art consulting, project management, procurement, graphic design, fabrication, framing, and installation, complementing each project's architectural design and aesthetics.



### Skyline Glass

Booth 408

<https://skyline.glass/>

Skyline provides glass solutions for healthcare environments. Our products offerings focus on privacy, cleanliness, adaptability, beauty and longevity. Glass lets in natural light, can accommodate artwork for privacy that has a healing effect on patients and on caregivers, and is impermeable. Privately owned and operated out of Chicago since 1983.



### SLD Technology

Booth 229

<https://www.sldus.com/>

SLD fabricates laminar airflow systems for ORs. AirFRAME is born from downflow cleanrooms where air, lighting, and ceiling mounts form a single fixture. Modularity reduces schedule, coordination, and site conflicts, lowering costs. Indigo-Clean lighting reduces SSI rates by 73% and kills SARS-CoV-2. SLD products are ‘Designed for Zero’ (D4Z) infections.

### SMART ENERGY SOLUTIONS

Booth 516

<https://smartenergyenterprises.com/>

Smart Energy Solutions delivers specialized LED lighting and Signage solutions for healthcare facilities, offering both indoor and outdoor applications. We focus on creating sustainable and energy-efficient products that enhance patient care environments and improve navigation. From patient rooms to outdoor wayfinding, our custom solutions ensure safety, clarity, and a welcoming atmosphere for all.

### Smith-Emery

Booth 208

<https://www.smithemery.com/>

Smith-Emery, the largest independently owned Construction Testing & Inspection firm on the West Coast, has provided QA services on Hospital Projects for over 100 years and has been involved in HCAI projects in CA since 1970. Our offices are located in LA, SF, Anaheim, NY, Montreal and Shanghai.



### Sonance Lab

Booth 505

Cardboard Cruncher - Simplify handling of cardboard box waste with the cardboard cruncher, developed by Sonance Lab. Save space, save time, and make transporting and recycling easier in your facility!

### SpawGlass

Booth 525

<https://SpawGlass.com>

Founded in 1953 by Louis Spaw and Frank Glass, SpawGlass is a commercial, civil and service contractor with nine offices across Texas and approximately 750 team members. The company is 100 percent employee-owned - with ownership open to all employees. SpawGlass' guarantee is the absolute best construction experience.

### Special-Lite Inc.

Booth 335

<https://special-lite.com/>

Special-Lite manufactures durable, high-quality, complete entrance systems, doors, interior aluminum framing, surface-mounted sliding door systems, and more for commercial buildings.

### St. Onge Company

Booth 213

<https://www.stonge.com/>

For more than 40 years, St. Onge Company has served the world's premier brands as a trusted supply chain engineering and logistics partner. Since 2002, we have done the same for our nation's best hospitals and health systems. Our legacy lies in the application of industrial engineering expertise to solve today's most challenging and complex problems while anticipating those of tomorrow.



### Stance Healthcare

Booth 402

<https://www.stancehealthcare.com/>

Stance Healthcare designs comfortable, beautiful, and durable furniture that sets a higher standard for the healthcare experience - one that encourages comfort and healing. Our award-winning products are thoughtfully designed with patients, visitors, and care providers in mind.



### Stantec

DG 5

<https://www.stantec.com/en>

Stantec is improving health worldwide through the power of design. Powerful client collaborations with our fully integrated planning, architecture and engineering practice have led to some of the world's most transformational, technologically advanced, sustainable and experience focused health and wellness projects globally. Please visit our site to learn more.



# EXHIBITORS



**HEALTHCARE  
FACILITIES**  
symposium and expo

## STERIS

**Booth 107**

<https://www.steris.com/>



**STERIS**

STERIS is a global leader in infection prevention, decontamination, gastrointestinal and surgical product and devices. The company offers a broad portfolio of products and solutions to help healthcare providers achieve their construction and/or renovation project objectives in a timely and cost effective manner.

## Strongarm Healthcare

**Booth 225**

<https://strongarmhealthcare.com/>

Strongarm Healthcare is a leading manufacturer of ergonomic display and keyboard workstations, featuring the CleanMount, the only arm solution with 100% internal cable management.



## Swath Design

**Sponsor**

<https://www.swathdesign.com/>

For over 30 years, Swath Design has been bringing clarity to the complexity of place by designing strategic visual systems that have a positive impact on how people experience, navigate, interact, and connect with built and natural environments. With every experiential and environmental graphic design, wayfinding/signage, branded environment, historical timeline, sponsor/donor recognition, and exhibit/display design project, we assess the people using the space, the conditions of the environment, and the sequence of events that the user takes along their journey. We ensure that the brand lives consistently in the built environment and cohesively tells a story that is engaging and memorable. Swath has had the privilege of creating wayfinding systems and engaging and uplifting experiences for a number of esteemed healthcare systems, including WVU Medicine and WVU Children's Hospital, Kettering Health Network, Memorial Hermann Health System, The Christ Hospital, Willis Knighton, and St. Elizabeth Healthcare. Our project management leaders each have over 20 years of experience in successfully managing large, complex projects both domestically and worldwide, collaborating with multidisciplinary teams, and delivering exceptional results within compressed schedules and tight budgets. Swath is design that moves people®



## Tarkett

**Booth 106**

<https://commercial.tarkett.com/>



There's so much more to flooring than meets the eye. Tarkett has the technologies to help you find the right solution for every type of space, from the lobby to the operating room and everything between. See how Tarkett approaches healthcare differently to help you identify the "Right Product.Right Space" — ensuring that flooring design decisions also contribute to safety, operational excellence, patient experiences, and outcomes.

## The Architect's Newspaper

**Media Sponsor**

<https://www.archpaper.com/>

## The Caritas Project

**Association Partner**

<https://www.thecaritasproject.info/>

## The Garland Company

**Booth 329**

<https://www.garlandco.com/>

Garland's product and service offerings are ideal to meet the needs of healthcare providers, aligning cost, quality, and market performance. Our industry-leading expertise and high-performance systems deliver a leak-free environment while allowing you to maintain your standard for healing and patient care.

## The Haskell Company

**DG 20**

[www.haskell.com](http://www.haskell.com)

## The Walsh Group

**Sponsor**

<https://www.walshgroup.com/>

Walsh/Archer Western is the 4th largest contractor, according to Modern Healthcare. Headquartered in Chicago, we have 20 offices in the US and Canada. Walsh strives to be the most valued construction services provider in North America. Our services include: planning, designing, building, outfitting, transitioning, financing, developing, maintaining and owning.

## TransLogic, a Swisslog Healthcare Company

**Booth 520**

<https://www.translogic.com/>

TransLogic is more than a tube system – it's a foundational part of a hospital's critical infrastructure. TransLogic, a Swisslog Healthcare company, has been the trusted market leader within the transport automation industry for over 100 years. Our coveted pneumatic tube systems change the workflows of nearly every organizational department including facilities, engineering, operations, and even outside hospital service providers like architects and contractors. Our tube systems are customized to fit new construction projects and are tailored to meet the efficiency and security goals of each facility. Leveraging preeminent industry experts, TransLogic further modernizes existing tube systems, regardless of the original solution provider. Proudly made in the USA, TransLogic has helped revolutionize the workflows of over 2,500 facilities across the United States. Learn more about what TransLogic can do for you [www.translogic.com](http://www.translogic.com). Or, give us a call: 1.800.396.9666.

## Trim USA

**Booth 120**

<https://trimusa.com/benif-home/>

Trim USA specializes in pressure sensitive film; our products all have a liner and an adhesive coating that is ready for installation. We are the US stocking distributor of BENIF Architectural Films by LX Hausys (formerly LG). With its wide range of finishes and applications, BENIF Architectural Film is an ideal surface solution for almost any venue.



## Triton Inc.

**Booth 112**

<https://tritonwp.com/>

Triton manufactures safer, stronger, and sensible alternatives to traditional roofing and waterproofing technologies. Operating from our global manufacturing headquarters in Iowa, Triton's forward-thinking products include liquid synthetic rubbers and slip-resistant TPO and PVC thermoplastic membranes. Our roofing products are used by many of the most renowned institutional and industrial organizations.



## Tsoi Kobus Design

**DG 17**

<https://tsoikobus.design/>

Tsoi Kobus Design creates award-winning environments for healthcare, science and technology, higher education, and commercial development clients. Our design approach advances knowledge discovery and combines cutting edge technology with humane environments. We believe design excellence is measured by client success and the path to delivering solutions begins with listening and understanding our clients' unique challenges, cultures, and missions.

**Unicel Architectural Corp.****Booth 219**<https://unicelarchitectural.com/>

Unicel Architectural offers an innovative line of specialty glazing (IGU) with integrated shading solutions to control the spread of infections and increase safety for both front-line staff and patients. Vision Control® is a patented, hermetically sealed glass unit combining louvers (operable or fixed) within glass that can be customized to virtually any shape for interior and exterior glazing applications. Its advanced louvered glazing technology eliminates strings and cords, ensures alignment, requires no maintenance and provides the ideal daylighting or privacy solution for healthcare, commercial, educational, institutional and any non-residential environments.

**Unistrut Midwest****Booth 226**<https://unistrut.biz/>

We provide innovative secondary structural support solutions that streamline your construction projects, saving you time and resources while ensuring superior quality and reliability. With Unistrut Midwest, you have a trusted partner committed to simplifying your construction journey and helping you build with confidence.

**Veritas Medical Solutions****Booth 232**<https://www.veritas-medicalsolutions.com/>

Veritas Medical Solutions: Leading global radiation shielding experts, offering VeriShield® modular solutions for rapid construction. 100% radiation shielding guaranteed, on schedule and budget. Flexible space-saving designs tailored to your requirements. Count on our vast experience and dedicated team for Linac staff and patient protection, ensuring project success.

**vHealth Lighting****Booth 202**[www.vhealthlighting.com](http://www.vhealthlighting.com)

Introducing the best-in-class healthcare product line at pricing that wins!! Our products are designed to meet stringent specifications of healthcare lighting. Built right here in USA, vHealth Lighting is Buy American Act compliant, making it the perfect solutions for Veteran's Administration hospitals and healthcare facilities. vHealth Lighting, Designed for Healthcare

**Walters Healthcare Resources****Booth 429**

The IN-DAPT Ceiling System is an advanced approach to integrating ultra-clean air, LED lighting, and surgical lights and booms. Our patented MEP raceway allows for a single point of connection while maximizing the time-savings of prefabrication.

**Whitehall Mfg/AcornVAC****Feature Area • Booth 509**<https://www.whitehallmfg.com>

Stop by our booth to find out why owners, architects, and engineers call us plumbing problem solvers! AcornVac, Inc. designs and manufactures environmentally friendly vacuum plumbing and waste disposal systems that simplify and minimize renovation disruption and enhance infection prevention. Whitehall Manufacturing provides the health care industry with in-room patient care units and toilets, surgical scrub sinks, and ligature resistant products that are unsurpassed in quality, function, and durability. Our top concern at Whitehall is in helping you ensure safe quality patient care.

**Whoop Wireless****Booth 131**<https://whoop-wireless.com/>

Whoop Wireless makes mobile devices work inside buildings all the time! Affordable in-building wireless solutions for mid sized buildings.

**WIELAND Healthcare****Booth 305**<https://wielandhealthcare.com/>

Wieland builds patient room and lounge furniture designed to assist caregivers and families. Industry-leading sleep sofas and patient recliners are available in a variety of styles. Wieland is committed to moving patient care forward. We look beyond the ordinary, seeking new solutions for patient spaces within various healthcare environments.

**Wolf Gordon****Booth 510**<https://www.wolfgordon.com/>

Wolf-Gordon is an American design company dedicated to inspiring the creation of outstanding interiors for the healthcare, hospitality, and workplace markets. Founded in 1967, we offer wallcovering, upholstery textiles, RAMPART® wall protection, Scuffmaster® paint, and Wink® dry-erase surfaces that are durable, sustainable, and easy to maintain.

**Women in Healthcare****Association Partner**<https://www.womeninhealthcare.org/>

The purpose of Women in Healthcare is to promote the professional development of women in the healthcare industry, to empower one another, support growth and mentorship, and support business through sharing successful techniques, leads, contacts, products and services. WIH's content is geared towards women in administration, operations and facilities and those who work with them. They provide content that furthers the individuals' knowledge of industry related fields and trends, enhances professional development tools and gives a forum for personal growth.





# HEALTHCARE FACILITIES

symposium and expo

September 24-26, 2025  
San Diego Convention Center  
San Diego, California

[hcarefacilities.com](https://hcarefacilities.com)

## For exhibiting and sponsorship opportunities:

please contact Ann Belz at [ann@jdevents.com](mailto:ann@jdevents.com) or 203-307-2695

## For speaking opportunities:

please contact Jenabeth Ferguson at [jenabeth@jdevents.com](mailto:jenabeth@jdevents.com) or 203-307-2696







# Nowhere to run. Nowhere to hide. Bad for germs, good for you.

Nonporous and mold-resistant, environmentally responsible, cost effective, beautiful, and easy to maintain – the finish does not support microbes and moisture won't accumulate – Terrazzo is the perfect solution for a healthy building.

